

## City of Mesa Museum Expansion Project (Federal Bldg Re-Use) #CP0213

### Project Narrative

**HistoricStreetscapes PLLC** is the prime/design architect on this project and all contact and correspondence will be routed thru Ron Peters AIA. [rlpeters@HistoricStreetscapes.com](mailto:rlpeters@HistoricStreetscapes.com)

Saemisch + Di Bella architects are the executive architects and will be responsible for all production documents. All direction for this phase will be thru Vince Di Bella. [vince@sdarch.com](mailto:vince@sdarch.com)>

All work has been completed using codes presently adopted by the City of Mesa and COM standards available on the COM website. The property was acquired from the National Park Service in 2001.

This project is for the adaptive use of the City of Mesa Federal Building located at 26 North MacDonald St. in downtown Mesa. The 22,000 sf 2 story (high bay) building is designated a local historic landmark by the city.

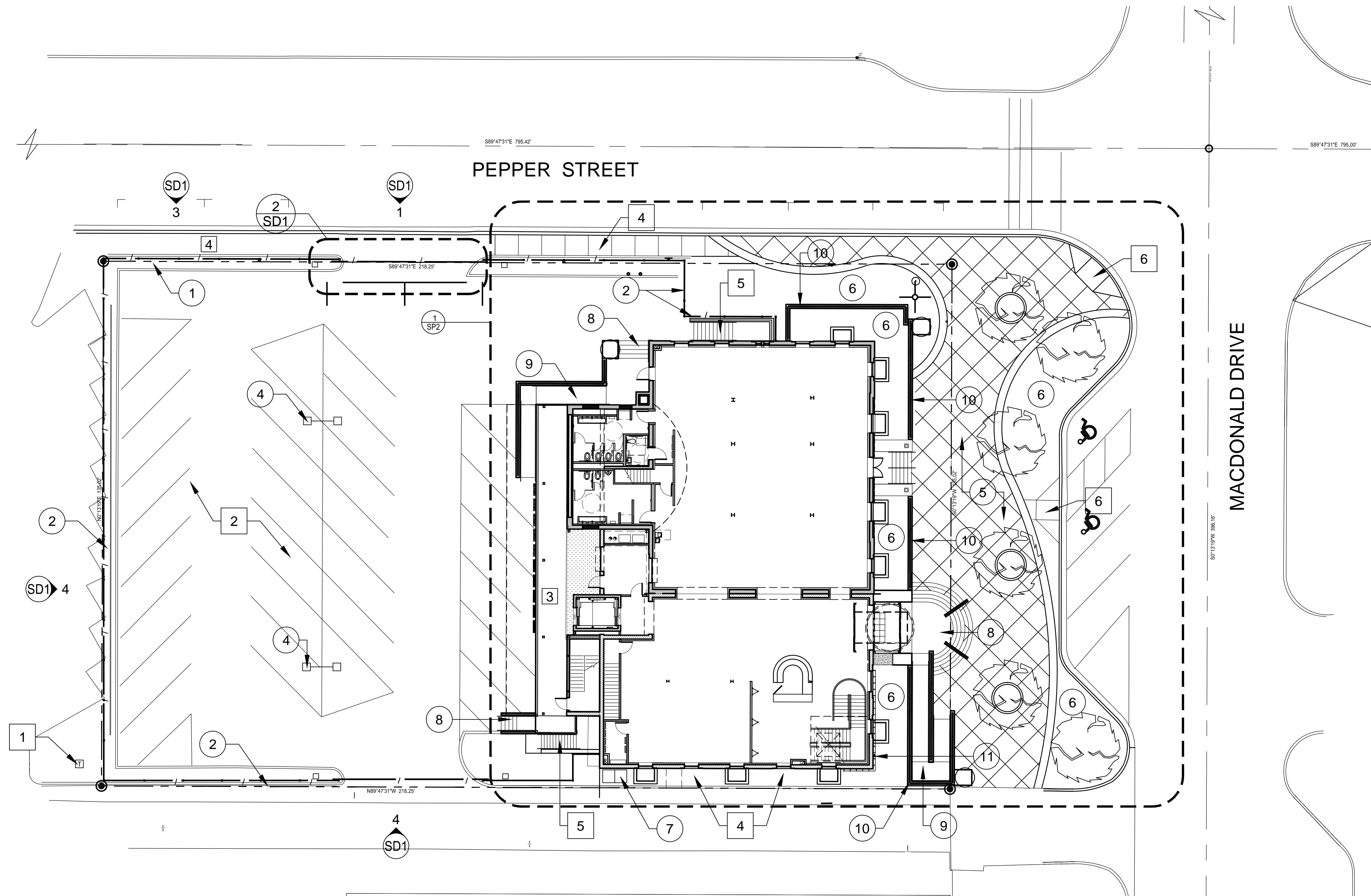
The facility will be home for the Mesa Historical Museum exhibits and storage and laboratory space for the AZ Museum of Natural History. There is no intention to add square footage to the building other than that required to meet exit requirements. The East elevation will have additions that were done in the 1970s removed and a new entry element with canopy and handicapped ramp added. A new stair tower will replace the old metal fire escape on the West elevation. The 1936 Post Office façade will not be modified. Historic exterior material will not be modified, only cleaned and repaired as necessary. No windows will be replaced on the exterior elevations. The new plan will include exhibit areas, storage areas, and laboratory and administration space.

The renovation will completely replace all HVAC, plumbing and electrical and add all new special systems to the facility. Structural modifications are meant to be minimal and necessitated thru space program needs. Landscaping will be upgraded and or replaced as budget permits. Otherwise the exterior landscaping already in the city right of way will be maintained.

This project will be constructed using the CM at Risk delivery method. Concord Construction Company of Mesa has been awarded the CM contract. The interior demolition has already been completed.

ARCHITECTURE.ART.PLANNING.HISTORIC PRESERVATION  
1711 E. Brown Road Mesa, AZ 85203 480.649.4450 Fax: 480.649.4450  
Email: [rlpeters@historicstreetscapes.com](mailto:rlpeters@historicstreetscapes.com)





- EXIST KEY NOTES** x
1. EXIST. ELECTRIC TRANSFORMER TO REMAIN.
  2. EXIST PARKING TO REMAIN
  3. EXIST DOCK TO REMAIN
  4. EXIST CONC SIDEWALK TO REMAIN
  5. EXIST CONC STAIR TO REMAIN

- NEW KEY NOTES** x
1. NEW SITE FENCE 'A', SEE DETAIL 3 & 4/SD1
  2. NEW SITE FENCE 'B' SEE DETAIL 2 & 1/SD1
  3. NEW ELECTRICALLY OPERATED GATE, SEE DETAIL
  4. NEW SIGHT LIGHT FIXTURES, SEE ELECT. DWGS
  5. NEW HARDSCAPE, SEE ENLARGED SITE PLAN
  6. NEW LANDSCAPE, SEE LANDSCAPE DWGS.
  7. NEW ELECTRICAL SES, SEE ELECT. DWGS
  8. NEW CONC. STAIRS
  9. NEW CONC ADA RAMP
  10. NEW ART GLASS WALL
  11. EXIST FIRE DEPT CONNECTION

**OVERALL SITE PLAN**

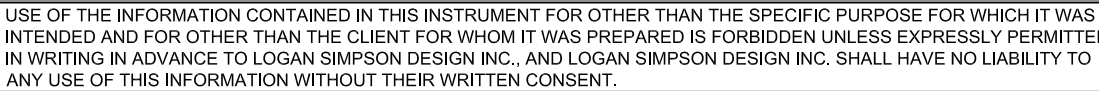
SCALE: 1/16" = 1'-0"



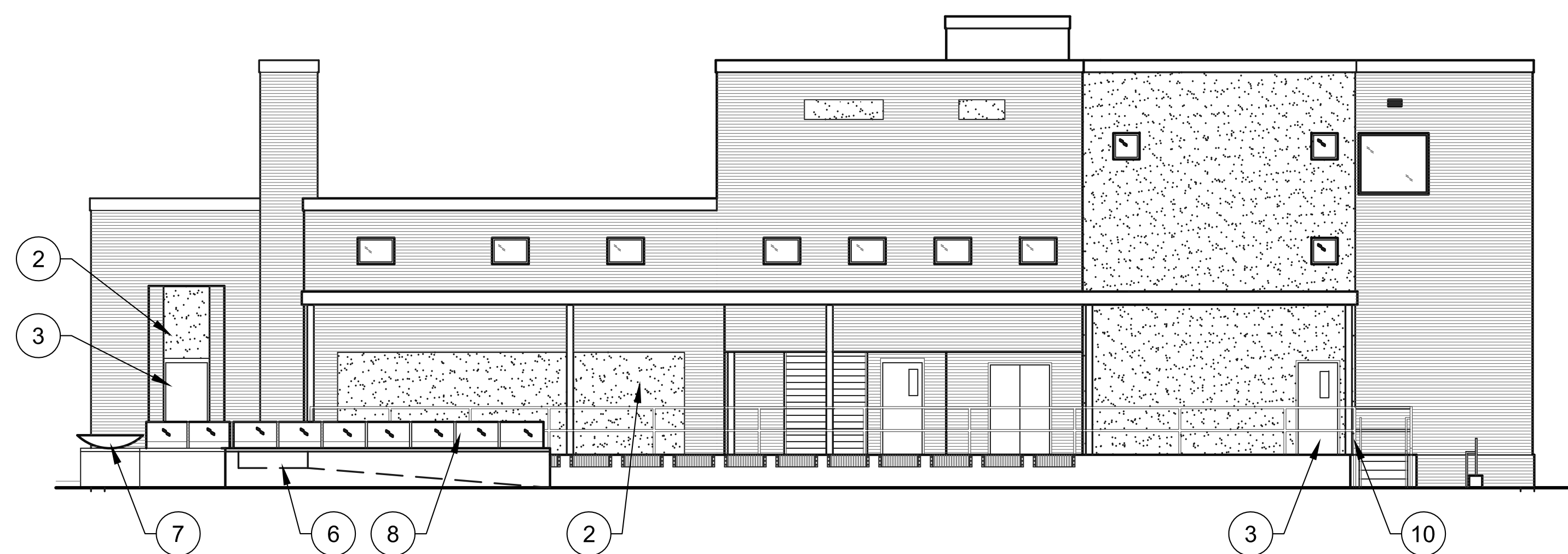
N:\1307-Federal Building COM\CDISP1.dwg 04.07.14 5:24pm Marly

	<b>HISTORICSTREETSCAPES PLLC</b> ARCHITECTURE, PLANNING, ART, HISTORIC PRESERVATION 1711 EAST BROWN ROAD MESA, ARIZONA 85203 OFFICE PHONE: 480.649.4450 CELL: 602.309.3524	
	<b>Saemisch + Di Bella</b> ARCHITECTS INC. 48 West Main Street Suite 200 Mesa, Arizona 85201 480-655-0633v 480-655-0632f www.sdarch.com SDA JOB NO. 1907	
CITY OF MESA ENGINEERING DEPARTMENT Federal Building Adaptive Re-Use		
DRAWN BY: AP ARCHITECT: RLP APPROVED BY: F. Rustam	OVERALL SITE PLAN	DRAWING <b>SP1</b>
W.O. - PROJ NO. CP0213	SHEET <b>21 of 120</b>	CATALOG NUMBERS <b>A-171218</b>



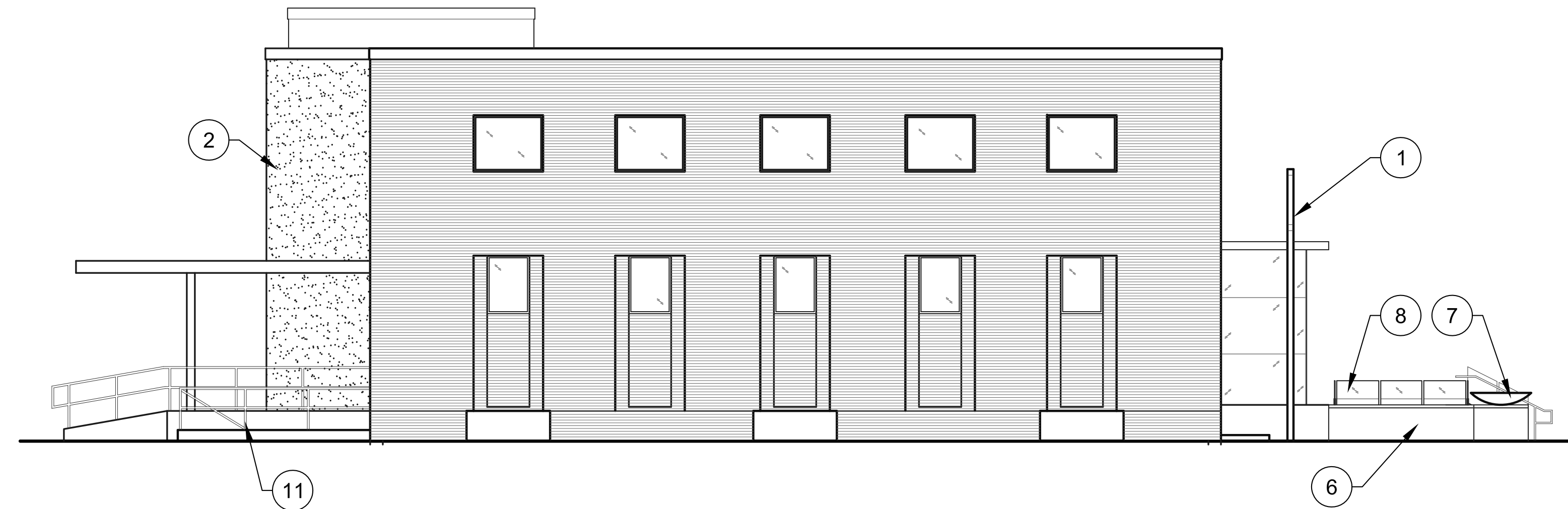






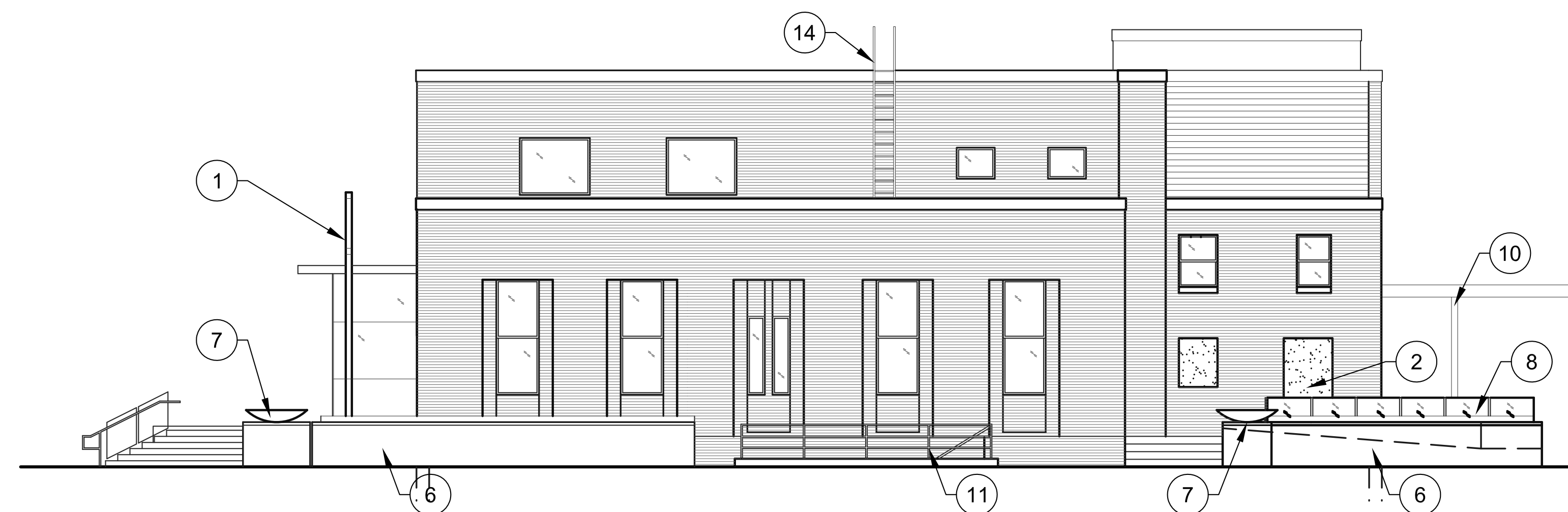
**WEST ELEVATION**

SCALE: 1/8" = 1'-0"



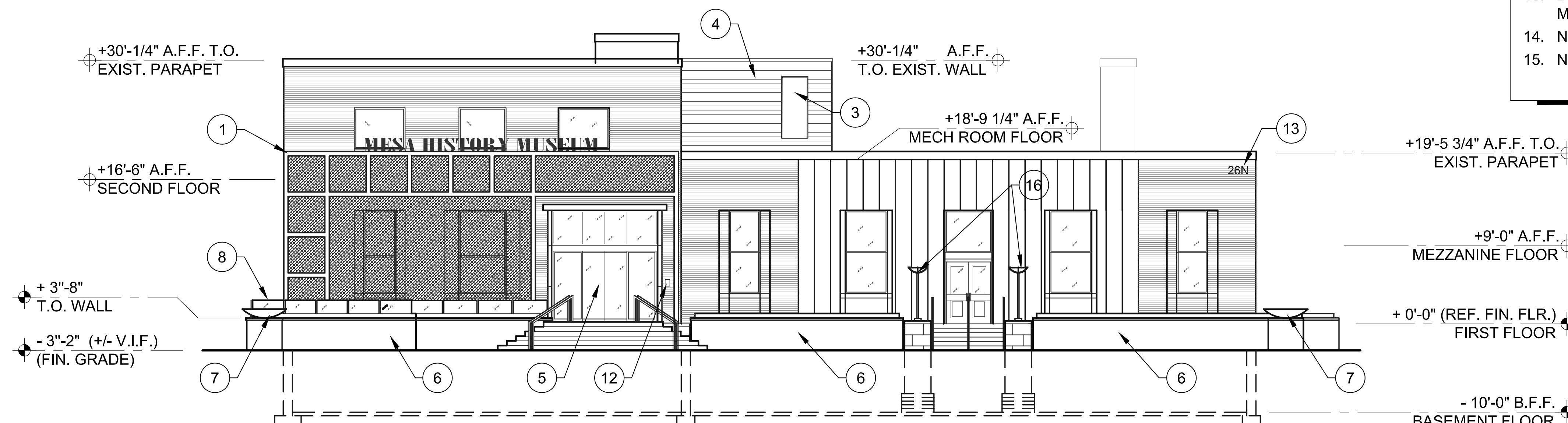
**SOUTH ELEVATION**

SCALE: 1/8" = 1'-0"



**NORTH ELEVATION**

SCALE: 1/8" = 1'-0"



**EAST ELEVATION**

SCALE: 1/8" = 1'-0"

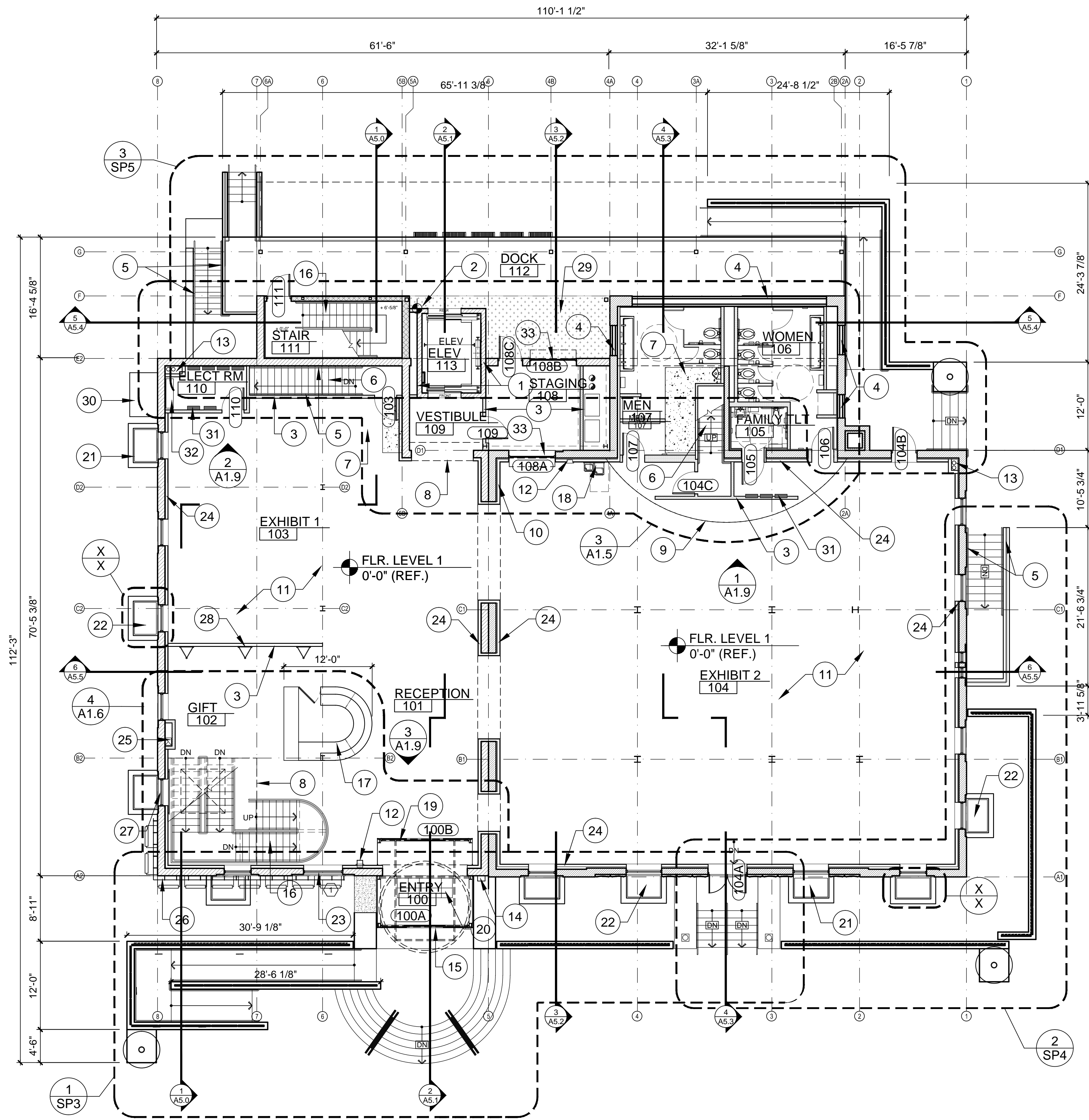
**ELEVATION KEYNOTES (X) (ALL MAY NOT APPLY)**

(NOTE: ALL COLORS SELECTED BY ARCHITECT)

1. FREE STANDING DECORATIVE STEEL FRAME ELEMENT WITH MESH INFILL AT SELECT LOCATIONS
2. CEMENT PLASTER FINISH OVER METAL FRAMED WALL AND / OR INFILL AT EXISTING MASONRY WALL
3. HOLLOW METAL DOOR AND FRAME - PAINT
4. NEW METAL WALL PANEL SYSTEM
5. STRUCTURAL INSULATED GLASS: SOLAR GREEN TINT; ALUMINUM FRAME TO MATCH EXISTING
6. CAST-IN-PLACE CONCRETE RETAINING / LANDSCAPE / RAMP WALL WITH SANDBLAST FINISH
7. NEW CONCRETE ART BOWL DISPLAY ON PEDESTAL
8. STRUCTURAL GLASS PANEL: SOLAR GREEN TINT
9. OVERHEAD ROLL-UP DOOR - CLEAR ALUMINUM FINISH
10. EXISTING TUBE STEEL COLUMNS; PAINT
11. CLEAN, PREP AND PAINT EXISTING STEEL GUARDRAIL, PAINT
12. FIRE DEPARTMENT KNOX BOX LOCATION
13. BUILDING PROPERTY ADDRESS, PER CITY OF MESA FIRE PREVENTION DETAIL FPD 505.1
14. NEW ROOF ACCESS LADDER, PAINT
15. NEW REPLICATED HISTORICAL LIGHT FIXTURE



N:\1307-Federal Building COM\CDAT.1.dwg 04.07.14 8:13pm Merty



**FLOOR LEVEL 1 PLAN**  
SCALE: 1/8" = 1'-0"



**NEW KEYNOTES** (X) (ALL MAY NOT APPLY)

1. NEW CMU WALL AT ELEVATOR
2. NEW ELEVATOR SHAFT LAYOUT POINT IN REFERENCE TO EXIST CONC FLOOR BEAMS ABOVE, SEE DEMO SHEET D2.0 FOR MORE INFO.
3. NEW METAL STUD PARTITION WALL, SEE WALL TYPES
4. NEW METAL STUD WALL INFILL AT EXIST OPENING
5. NEW 1-1/2" DIA. STEEL HANDRAIL AT EXIST STAIRS, PAINT
6. NEW 2-1/2" HIGH PREFORMED CONC STAIR TREADS ADHESIVELY ATTACHED TO EXIST STAIR TREADS
7. NEW STRUCTURAL FLOOR INFILL AT FORMER OPENING IN FLOOR, INDICATED WHERE HATCHED, SEE STRUCTURAL DWGS.
8. DASHED LINE INDICATES BEAM, CANOPY, OR FLOOR LINE ABOVE
9. DASHED LINE INDICATES FRAMED MARQUEE ELEMENT ABOVE
10. NEW CMU INFILL AT EXIST WALL OPENING, MATCH ADJACENT SURFACE OF EXIST WALL - COORDINATE WITH MECHANICAL DWGS
11. NEW FLOOR FINISH AND FLOOR TREATMENT, SEE SHEETS A1.1B AND A1.1C FOR MORE INFO.
12. FIRE EXTINGUISHER CABINET & FIRE EXTINGUISHER
13. ROOF DRAIN LEADERS, SEE PLUMBING DWGS.
14. FIRE DEPARTMENT KNOX BOX LOCATION
15. NO SMOKING INTERNATIONAL SYMBOL, WHITE VINYL CUT SELF-ADHERING SIGN, 4" DIA. AS PER C.O.M. CODE ORDINANCE
16. NEW STEEL STAIRS, SEE ENLARGED PLAN AND STRUCTURAL DWGS.
17. MILLWORK RECEPTION DESK
18. ADA DRINKING FOUNTAIN, SEE PLUMBING DWGS.
19. NEW STEEL FRAMED GLASS ENTRY VESTIBULE, SEE WALL SECTION AND STRUCTURAL DWGS FOR MORE INFO
20. NEW STRUCTURAL GLASS FLOOR PANEL, SEE STRUCTURAL DWGS
21. RAISED WALL AT EXIST CONC RETAINING WALL AT EXIST LIGHT WELL, SEE STRUCTURAL DWGS.
22. NEW STEEL FRAMED GLASS CLOSURE PANEL AT TOP OF EXIST LIGHT WELL
23. NEW WINDOW AT EXIST MASONRY OPENING
24. NEW FURRING AT EXIST WALL. 3-5/8" METAL STUDS AT 24" O.C. WITH 1/2" PLYWOOD SHEATHING AND 5/8" GYP. BD. (PAINT) TO TOP OF EXIST WINDOWS, SEE INTERIOR ELEVATION
25. NEW FRAMED ENCLOSURE AT HOOD VENT FROM BASEMENT, SEE MECHANICAL DWGS
26. NEW METAL MESH EXTERIOR WALL PANEL
27. NEW METAL MESH WINDOW SCREEN
28. NEW TRIANGULAR TRUSS ELEMENT TO B.O. FLOOR DECK ABOVE
29. NEW CONC RAMP WITH 1/4" CHECKER PLATE TOPPING
30. NEW ELECTRICAL SERVICE ENTRY SECTION (SES), SEE ELECTRICAL DWGS.
31. NEW ELECTRICAL PANEL, SEE ELECTRICAL DWGS.
32. NEW ELECTRICAL DISTRIBUTION BOARD, SEE ELECTRICAL DWGS.
33. NEW OPENING AT EXIST MASONRY WALL, SEE DEMO PLANS

**NOTE:**

ALL ELEVATIONS GIVEN ARE IN REFERENCE TO FINISH FLOOR HEIGHT OF EXIST FIRST FLOOR SLAB BEFORE APPLICATION OF NEW CONC TOPPING OR OTHER FLOOR FINISHES.

**EXIST KEYNOTES** (X) (ALL MAY NOT APPLY)

1. EXIST WALL TO REMAIN
2. EXIST COLUMN TO REMAIN
3. EXIST LIGHT WELL TO REMAIN
4. EXIST 6" RAISED CONC FLOOR SLAB TO REMAIN
5. EXIST WINDOW TO REMAIN



DRAWN BY: AP  
ARCHITECT: RLP  
APPROVED BY: F. Rustam

W.O. -  
PROJ NO. CP0213

HISTORICSTREETSCAPES PLLC  
ARCHITECTURE, PLANNING, ART, HISTORIC PRESERVATION  
1711 EAST BROWN ROAD MESA, ARIZONA 85203  
OFFICE PHONE 480.649.4450 CELL 602.309.3524

**Saemisch + Di Bella**

ARCHITECTS INC.

48 West Main Street Suite 200 Mesa, Arizona 85201  
480-655-0633v 480-655-0632f www.sdarch.com

SOA JOB NO. 1907

CITY OF MESA  
ENGINEERING DEPARTMENT

Federal Building Adaptive Re-Use

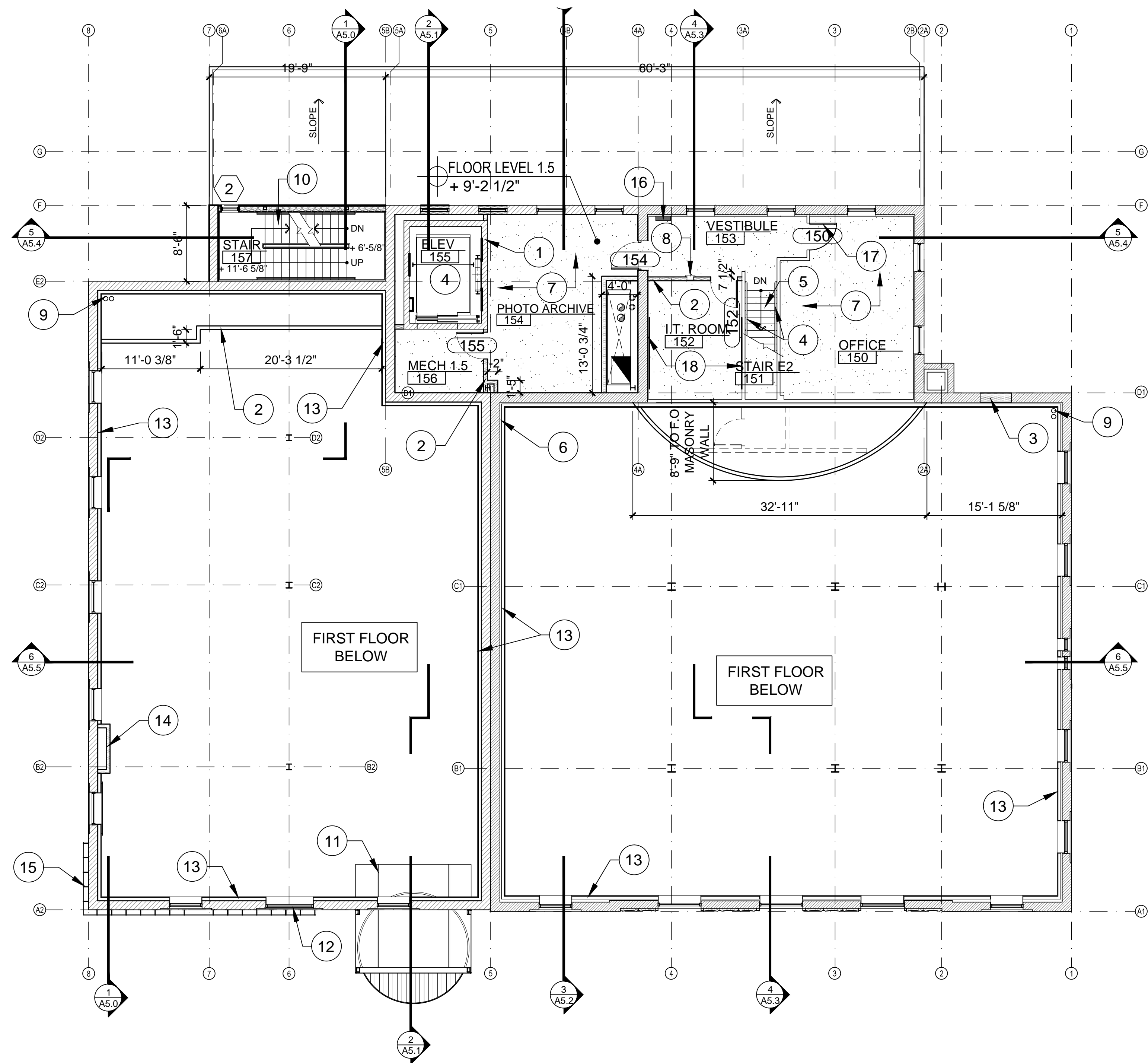
FLOOR  
LEVEL 1 PLAN

**A1.1**

SHEET  
29 of 120

CATALOG NUMBERS  
A-171226





## FLOOR LEVEL 1.5 PLAN

SCALE: 1/8" = 1'-0"



### NEW KEYNOTES (X) (ALL MAY NOT APPLY)

1. NEW CMU WALL AT ELEVATOR
2. NEW METAL STUD PARTITION WALL, SEE WALL TYPES
3. NEW METAL STUD WALL INFILL AT EXIST OPENING
4. NEW 1-1/2" DIA. STEEL HANDRAIL AT EXIST STAIRS, PAINT
5. NEW 2-1/2" HIGH PREFORMED CONC STAIR TREADS ADHESIVELY ATTACHED TO EXIST STAIR TREADS
6. NEW CMU INFILL AT EXIST WALL OPENING, MATCH ADJACENT SURFACE OF EXIST WALL - COORDINATE WITH MECHANICAL DWGS
7. NEW 2-1/2" LIGHTWEIGHT CONC TOPPING AT EXIST CONC SLAB WHERE SHOWN
8. FIRE EXTINGUISHER CABINET & FIRE EXTINGUISHER
9. ROOF DRAIN LEADERS, SEE PLUMBING DWGS.
10. NEW STEEL STAIRS, SEE ENLARGED PLAN AND STRUCTURAL DWGS.
11. NEW STEEL FRAMED GLASS ENTRY VESTIBULE BELOW, SEE WALL SECTION AND STRUCTURAL DWGS FOR MORE INFO
12. NEW WINDOW AT EXIST MASONRY OPENING
13. NEW FURRING AT EXIST WALL. 3-5/8" METAL STUDS AT 24" O.C. WITH 1/2" PLYWOOD SHEATHING AND 5/8" GYP. BD. (PAINT) TO TOP OF EXIST WINDOWS, SEE INTERIOR ELEVATION
14. NEW FRAMED ENCLOSURE AT HOOD VENT FROM BASEMENT, SEE MECHANICAL DWGS
15. NEW METAL MESH EXTERIOR WALL PANEL
16. NEW ELECTRICAL PANEL, SEE ELECTRICAL DWGS.
17. REUSE EXIST. DOOR, CLEAN & REPAINT
18. NEW TELEPHONE MOUNTING BOARD, SEE ELECTRICAL DWGS

### NOTE:

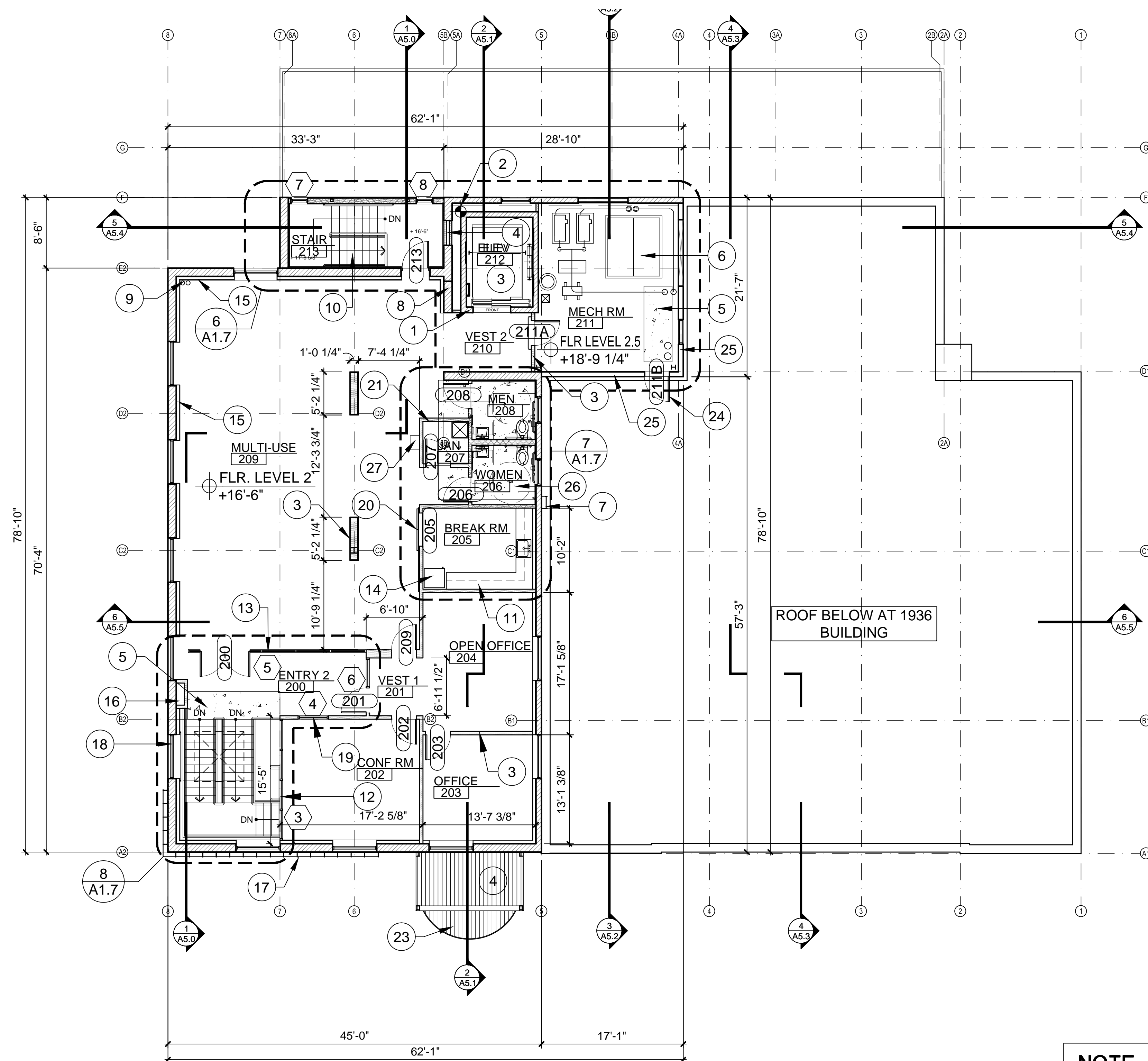
ALL ELEVATIONS GIVEN ARE IN REFERENCE TO FINISH FLOOR HEIGHT OF EXIST FIRST FLOOR SLAB BEFORE APPLICATION OF NEW CONC TOPPING OR OTHER FLOOR FINISHES.

### EXIST KEYNOTES (X) (ALL MAY NOT APPLY)

1. EXIST WALL TO REMAIN
2. EXIST COLUMN TO REMAIN
3. EXIST LIGHT WELL TO REMAIN
4. EXIST 6" RAISED CONC FLOOR SLAB TO REMAIN
5. EXIST WINDOW TO REMAIN

	<b>HISTORICSTREETSCAPES PLLC</b> ARCHITECTURE, PLANNING, ART, HISTORIC PRESERVATION 1711 EAST BROWN ROAD MESA, ARIZONA 85203 OFFICE PHONE 480.649.4450 CELL 602.309.3524	
	<b>Saemisch + Di Bella</b> ARCHITECTS INC. 48 West Main Street Suite 200 Mesa, Arizona 85201 480-655-0633v 480-655-0632f www.sdash.com SBA JOB NO. 1907	
CITY OF MESA ENGINEERING DEPARTMENT Federal Building Adaptive Re-Use		
FLOOR LEVEL 1.5 PLAN		DRAWING <b>A1.2</b>
SHEET 32 of 120		CATALOG NUMBERS A-171229





## FLOOR LEVEL 2 PLAN

SCALE: 1/8" = 1'-0"



### NEW KEYNOTES (X) (ALL MAY NOT APPLY)

1. NEW CMU WALL AT ELEVATOR
2. NEW ELEVATOR SHAFT LAYOUT POINT IN REFERENCE TO EXIST CONC FLOOR BEAMS ABOVE, SEE DEMO SHEET D2.0 FOR MORE INFO.
3. NEW METAL STUD PARTITION WALL, SEE WALL TYPES
4. NEW METAL STUD WALL INFILL AT EXIST OPENING
5. NEW STRUCTURAL FLOOR INFILL AT FORMER OPENING IN FLOOR, INDICATED WHERE HATCHED, SEE STRUCTURAL DWGS.
6. NEW MECHANICAL EQUIPMENT, SEE MECHANICAL DWGS.
7. NEW ROOF ACCESS LADDER
8. NEW CMU INFILL AT EXIST WALL OPENING, MATCH ADJACENT SURFACE OF EXIST WALL - COORDINATE WITH MECHANICAL DWGS
9. ROOF DRAIN LEADERS, SEE PLUMBING DWGS.
10. NEW STEEL STAIRS, SEE ENLARGED PLAN AND STRUCTURAL DWGS.
11. MILLWORK CABINET
12. ALUMINUM STOREFRONT SYSTEM
13. FRAMELESS GLASS PARTITION WALL AND ENTRY SYSTEM
14. REFRIGERATOR; OWNER SUPPLIED
15. NEW FURRING AT EXIST WALL. 3-5/8" METAL STUDS AT 24" O.C. WITH 1/2" PLYWOOD SHEATHING AND 5/8" GYP. BD. (PAINT) TO TOP OF EXIST WINDOWS, SEE INTERIOR ELEVATION
16. NEW FRAMED ENCLOSURE AT HOOD VENT FROM BASEMENT, SEE MECHANICAL DWGS
17. NEW METAL MESH EXTERIOR WALL SCREEN
18. NEW METAL MESH WINDOW SCREEN
19. SALVAGED WINDOW FROM FIRST FLOOR, SEE DEMO PLANS
20. SALVAGED DOORS FROM PHASE I DEMOLITION
21. NEW ELECTRICAL PANEL, SEE ELECTRICAL DWGS.
22. NEW STEEL FRAMED GLASS ENTRY TOWER, SEE WALL SECTION AND STRUCTURAL DWGS
23. METAL CANOPY BELOW
24. NEW DOOR AT EXIST. INSULATED METAL PANEL WALL
25. NEW METAL WALL PANEL SYSTEM
26. MEW STRUCTURAL FLOOR AT REMOVED FLOOR AREAS WHERE DECK HAD RESTED, SEE DEMO PLANS AND STRUCTURAL DWGS.
27. FIRE EXTINGUISHER CABINET & FIRE EXTINGUISHER

### NOTE:

ALL ELEVATIONS GIVEN ARE IN REFERENCE TO FINISH FLOOR HEIGHT OF EXIST FIRST FLOOR SLAB BEFORE APPLICATION OF NEW CONC TOPPING OR OTHER FLOOR FINISHES.

### EXIST KEYNOTES (X) (ALL MAY NOT APPLY)

1. EXIST WALL TO REMAIN
2. EXIST COLUMN TO REMAIN
3. EXIST LIGHT WELL TO REMAIN
4. EXIST 6" RAISED CONC FLOOR SLAB TO REMAIN
5. EXIST WINDOW TO REMAIN



HISTORICSTREETSCAPES PLLC  
ARCHITECTURE, PLANNING, ART, HISTORIC PRESERVATION  
1711 EAST BROWN ROAD MESA, ARIZONA 85203  
OFFICE PHONE 480.649.4450 CELL 602.309.3524

**Saemisch + Di Bella**  
ARCHITECTS INC.

48 West Main Street Suite 200 Mesa, Arizona 85201  
480-655-0633v 480-655-0632f www.sdash.com

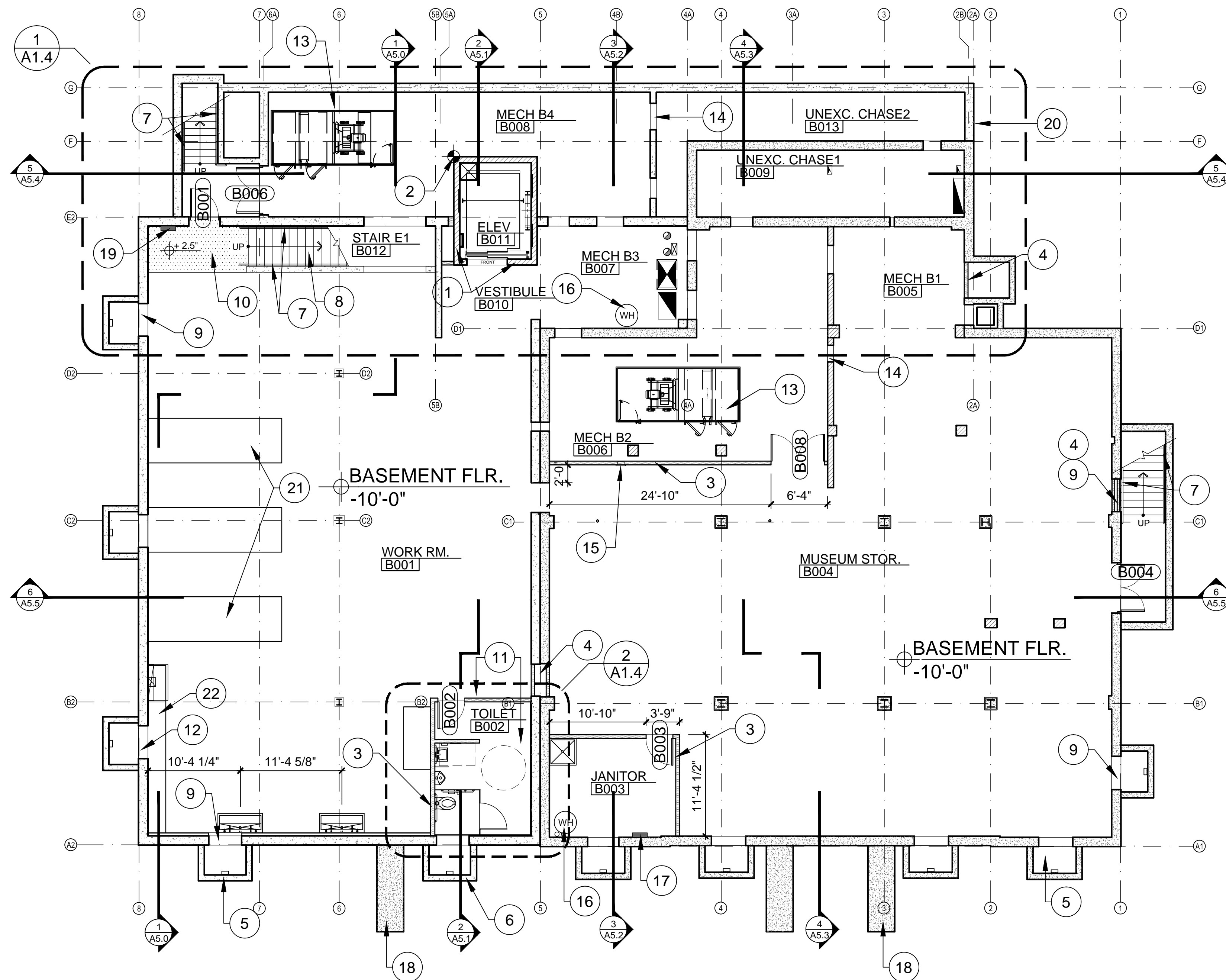
CITY OF MESA  
ENGINEERING DEPARTMENT

Federal Building Adaptive Re-Use

FLOOR  
LEVEL 2 PLAN  
**A1.3**

SHEET  
33 of 120  
CATALOG NUMBERS  
A-171230





## BASEMENT FLOOR PLAN

SCALE: 1/8" = 1'-0"



## WALL LEGEND

- NEW 3-5/8" 25 GA. MTL STUD WALL AT 24" O.C. W/ 5/8" TYPE 'X' GYP. BD. EA. SIDE
- NEW 3 5/8" OR 6" 25 GA. MTL STUD WALL AT 24" O.C. W/ 5/8" TYPE 'X' GYP. BD. EA. SIDE TO UNDERSIDE OF FLOOR/ROOF STRUCTURE W/ SOUND BATT ATTENUATION INSUL.
- NEW 3 5/8" 25 GA. MTL STUD WALL AT 24" O.C. TO + 10'-0" A.F.F. WITH PAINTED 5/8" TYPE 'X' GYP. BD. EA. SIDE, OVER 1/2" PLYWOOD SHEATHING AT DISPLAY SIDE ONLY AND HORIZONTAL SLOTTED DISPLAY WALL SYSTEM AT GIFT SHOP.

- EXISTING MASONRY WALL
- EXISTING CONCRETE WALL
- NEW 8" (U.O.N.) WIDE CONC. WALL
- NEW 8" (U.O.N.) WIDE CMU WALL
- RECESSED FIRE EXTINGUISHER CABINET AND FIRE EXTINGUISHER
- WALL MOUNTED FIRE EXTINGUISHER

## NOTE:

ALL ELEVATIONS GIVEN ARE IN REFERENCE TO FINISH FLOOR HEIGHT OF EXIST FIRST FLOOR SLAB BEFORE APPLICATION OF NEW CONC TOPPING OR OTHER FLOOR FINISHES.

## EXIST KEYNOTES

- 1. EXIST WALL TO REMAIN
- 2. EXIST COLUMN TO REMAIN
- 3. EXIST LIGHT WELL TO REMAIN
- 4. EXIST 6" RAISED CONC FLOOR SLAB TO REMAIN
- 5. EXIST WINDOW TO REMAIN

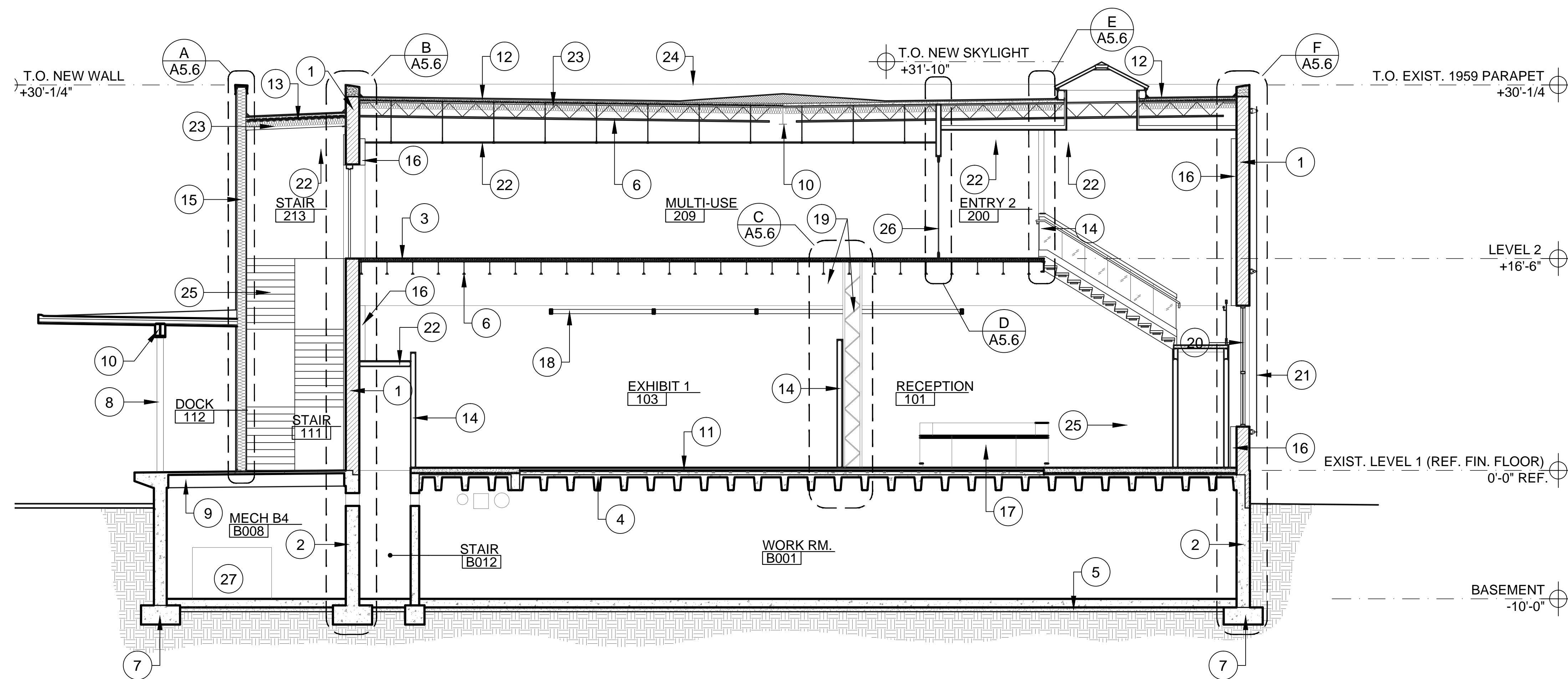
## NEW KEYNOTES

(ALL MAY NOT APPLY)

- 1. NEW CMU WALL AT ELEVATOR
- 2. NEW ELEVATOR SHAFT LAYOUT POINT IN REFERENCE TO EXIST CONC FLOOR BEAMS ABOVE, SEE DEMO SHEET D2.0 FOR MORE INFO.
- 3. NEW METAL STUD PARTITION WALL, SEE WALL TYPES
- 4. NEW METAL STUD WALL INFILL AT EXIST OPENING
- 5. CAP EXIST DRAIN AT EXIST LIGHT WELL, TYP.
- 6. EXTEND EXIST CONC RETAINING WALLS AT LIGHT WELL UNDER NEW BUILDING ENTRY, SEE BUILDING SECTION AND STRUCTURAL DWGS.
- 7. NEW 1-1/2" DIA. STEEL HANDRAIL AT EXIST STAIRS, PAINT
- 8. NEW 2-1/2" HIGH PREFORMED CONC STAIR TREADS ADHESIVELY ATTACHED TO EXIST STAIR TREADS
- 9. CLEAN AND PREP OPENING AT CONC WALL AT REMOVED WINDOW OR LOUVER LOCATIONS, TYPICAL OF 11.
- 10. NEW 2-1/2" RAISED CONC LANDING WHERE SHOWN STIPPLED
- 11. NEW CONC TOPPING AT PREVIOUSLY DEMO'D CONC SLAB LOCATIONS IN THIS AREA WHERE THEY OCCUR. PROVIDE SMOOTH SURFACE FLUSH WITH ADJACENT SURFACES.
- 12. NEW VENT HOOD PER MECHANICAL DWGS.
- 13. NEW MECHANICAL EQUIPMENT, SEE MECHANICAL DWGS.
- 14. NEW OPENING FOR DUCTWORK AT EXIST WALL, SEE MECHANICAL AND STRUCTURAL DWGS.
- 15. FIRE EXTINGUISHER CABINET & FIRE EXTINGUISHER
- 16. WATER HEATER, SEE PLUMBING DWGS.
- 17. NEW ELECTRICAL INVERTER, SEE ELECTRICAL DWGS
- 18. CONC. FOUNDATION FOR PLATFORM WALL ABOVE
- 19. NEW ELECTRICAL PANEL, SEE ELECTRICAL DWGS.
- 20. REPAIR WALL AT REMOVED LOUVRE LOCATION WITH LIKE MATERIAL
- 21. LAB DESKS
- 22. FLUME HOOD PER MECHANICAL

	<b>HISTORICSTREETSCAPES PLLC</b> ARCHITECTURE, PLANNING, ART, HISTORIC PRESERVATION 1711 EAST BROWN ROAD MESA, ARIZONA 85203 OFFICE PHONE 480.649.4450 CELL 602.309.3524	
	<b>Saemisch + Di Bella</b> ARCHITECTS INC. 48 West Main Street Suite 200 Mesa, Arizona 85201 480-655-0633v 480-655-0632f www.sdarch.com BDA JOB NO. 1507	
CITY OF MESA ENGINEERING DEPARTMENT Federal Building Adaptive Re-Use		
DRAWN BY: AP ARCHITECT: RLP APPROVED BY: F. Rustam	BASEMENT FLOOR PLAN	DRAWING <b>A1.0</b>
W.O. - PROJ NO. CP0213	SHEET 28 of 120	CATALOG NUMBERS A-171225



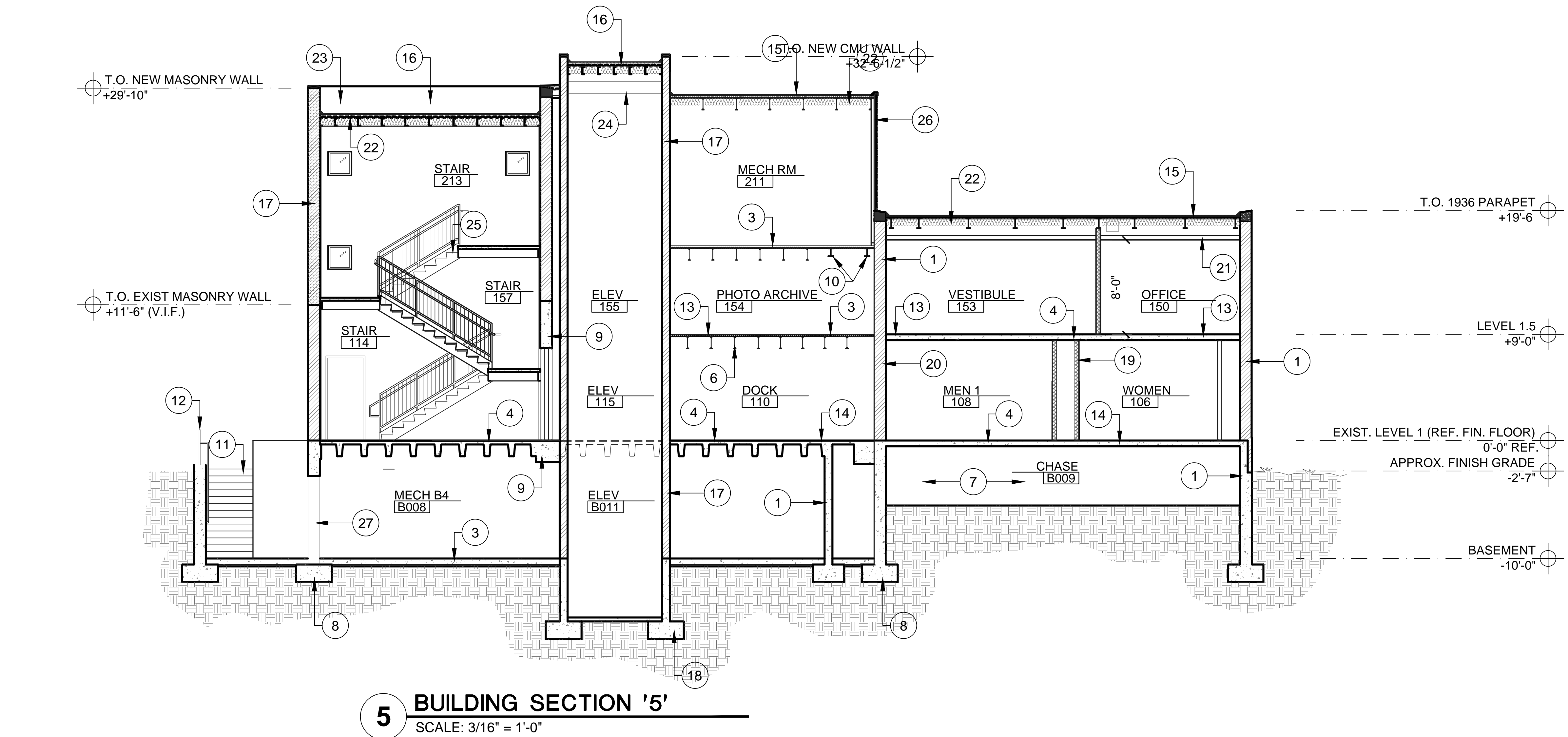


**1 BUILDING SECTION '1'**  
SCALE: 1/4" = 1'-0"

### NEW KEYNOTES (X)

- |   |   |   |
|---|---|---|
| 1. EXIST MASONRY WALL, SEE FLOOR PLANS                                      | 12. NEW ROOF SYSTEM OVER NEW TAPERED INSULATION OVER EXIST ROOF DECK  | 21. NEW METAL MESH MATERIAL AT BUILDING EXTERIOR, SEE FLOOR PLANS AND BUILDING ELEVATIONS   |
| 2. EXIST CONC WALL, SEE FLOOR PLANS   | 13. NEW ROOF SYSTEM OVER RIGID INSULATION OVER NEW STEEL FRAMING, SEE STRUCTURAL DWGS                       | 22. CEILING SYSTEM AS SCHEDULED, SEE INTERIOR FINISHES SCHEDULE AND REFLECTED CEILING PLANS |
| 3. EXIST COMPOSITE METAL DECK AND CONC FLOOR OR ROOF SYSTEM                 | 14. NEW PARTITION WALL, SEE FLOOR PLAN  | 23. NEW BATT INSULATION   |
| 4. EXIST PRECAST CONC AND CONC FLOOR SYSTEM                                 | 15. NEW METAL STUD FRAMED EXTERIOR WALL, SEE STRUCTURAL DWGS  | 24. ROOF / PARAPET BEYOND   |
| 5. EXIST CONC SLAB  | 16. NEW FURRING AT EXIST EXTERIOR WALL, SEE FLOOR PLANS   | 25. NEW STEEL STAIR   |
| 6. EXIST STEEL FLOOR OR ROOF JOIST  | 17. NEW RECEPTION DESK  | 26. NEW FRAMELESS GLASS PARTITION AND ENTRY SYSTEM  |
| 7. EXIST CONC WALL FOOTER   | 18. NEW UNISTRUT GRID ELEMENT FOR DISPLAY LIGHTING, SEE ELECTRICAL DWGS                                     | 27. NEW MECHANICAL EQUIPMENT, SEE MECHANICAL DWGS   |
| 8. EXIST STEEL COLUMN   | 19. NEW METAL DISPLAY WALL TRUSS  |   |
| 9. EXIST CONC BEAM  | 20. NEW WINDOW AT EXIST OPENING IN EXTERIOR MASONRY WALL AT REMOVED DOOR LOCATION, SEE DEMO AND FLOOR PLANS |   |
| 10. EXIST STEEL BEAM  |   |   |
| 11. NEW SLAB IMPROVEMENT AND / OR FLOOR FINISH AS PER SHEET A1.1A AND A1.1B |   |   |

	<b>HISTORICSTREETSCAPES PLLC</b> ARCHITECTURE.PLANNING.ART.HISTORIC PRESERVATION 1711 EAST BROWN ROAD MESA, ARIZONA 85203 OFFICE PHONE 480.649.4450 CELL 602.309.3524	
	<b>Saemisch + Di Bella</b> ARCHITECTS INC. 48 West Main Street Suite 200 Mesa, Arizona 85201 480-655-0633v 480-655-0632f www.sdarch.com SDA JOB NO. 1907	
CITY OF MESA ENGINEERING DEPARTMENT Federal Building Adaptive Re-Use		
DRAWN BY: AP ARCHITECT: RLP APPROVED BY: F. Rustam	BUILDING SECTIONS SHEET 52 of 120	CATALOG NUMBERS <b>A5.0</b> A-171249

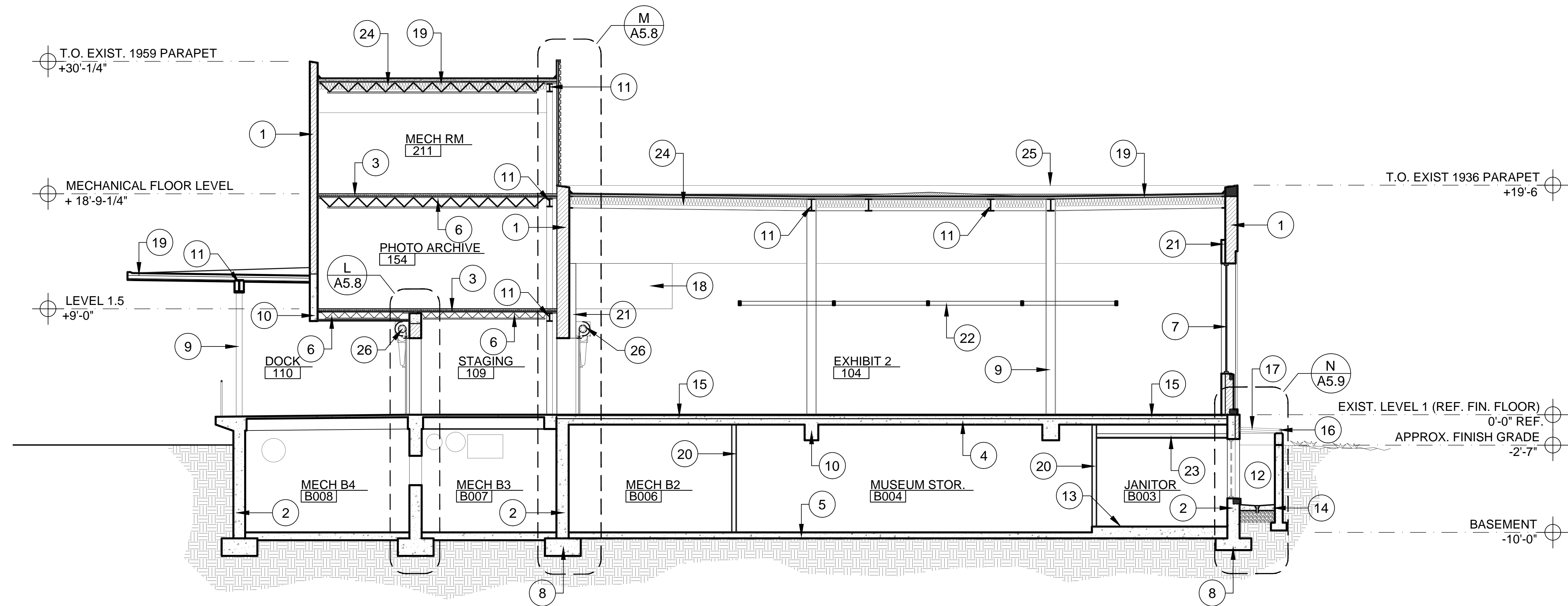


#### NEW KEYNOTES (X)

- |   |   |   |
|---|---|---|
| 1. EXIST CMU WALL, SEE FLOOR PLANS                          | 12. EXIST STEEL GUARD RAIL, CLEAN AND PAINT   | 20. NEW FURRING AT EXIST EXTERIOR WALL, SEE FLOOR PLANS                                     |
| 2. EXIST CONC WALL, SEE FLOOR PLANS                         | 13. NEW 2 1/2" LIGHTWEIGHT CONC. FLOR TOPPING AT EXIST FLOOR                                  | 21. CEILING SYSTEM AS SCHEDULED, SEE INTERIOR FINISHES SCHEDULE AND REFLECTED CEILING PLANS |
| 3. EXIST COMPOSITE METAL DECK AND CONC FLOOR OR ROOF SYSTEM | 14. NEW SLAB IMPROVEMENT AND / OR FLOOR FINISH AS PER SHEET A1.1A AND A1.1B                   | 22. NEW BATT INSULATION   |
| 4. EXIST PRECAST CONC AND CONC FLOOR SYSTEM                 | 15. NEW ROOF SYSTEM OVER NEW TAPERED INSULATION OVER EXIST ROOF DECK                          | 23. ROOF / PARAPET BEYOND   |
| 5. EXIST CONC SLAB  | 16. NEW ROOF SYSTEM OVER 2 1/2" CONC. OVER B DECK OVER NEW STEEL FRAMING, SEE STRUCTURAL DWGS | 24. NEW ELEVATOR HOIST BEAM, SEE STRUCTURAL DRAWINGS  |
| 6. EXIST STEEL FLOOR OR ROOF JOIST                          | 17. NEW CMU WALL; SEE STRUCTURAL DWGS.  | 25. NEW STEEL STAIR   |
| 7. EXIST UNEXCAVATED AREA                                   | 18. NEW CONC WALL FOOTER, SEE STRUCTURAL DWGS.  | 26. NEW METAL WALL PANEL SYSTEM OVER EXIST INSULATED METAL WALL PANEL SYSTEM                |
| 8. EXIST CONC WALL FOOTER                                   | 19. NEW PARTITION WALL, SEE FLOOR PLAN  | 27. NEW HOLLOW METAL DOOR & FRAME   |
| 9. EXIST CONC BEAM  |   |   |
| 10. EXIST STEEL BEAM  |   |   |
| 11. EXIST EXTERIOR CONC STAIR                               |   |   |

	<b>HISTORICSTREETSCAPES PLLC</b> ARCHITECTURE, PLANNING, ART, HISTORIC PRESERVATION 1711 EAST BROWN ROAD MESA, ARIZONA 85203 OFFICE PHONE 480.649.4450 CELL 602.309.3524	
	<b>Saemisch + Di Bella</b> ARCHITECTS INC. 48 West Main Street Suite 200 Mesa, Arizona 85201 480-655-0633v 480-655-0632f www.sdash.com SDA JOB NO. 1907	
<b>CITY OF MESA</b> <b>ENGINEERING DEPARTMENT</b>		
<b>Federal Building Adaptive Re-Use</b>		
DRAWN BY: AP ARCHITECT: RLP APPROVED BY: F. Rustam	<b>BUILDING SECTIONS</b>	<b>A5.4</b>
W.O. - PROJ NO. CP0213	<b>SHEET 56 of 120</b>	<b>CATALOG NUMBERS A-171253</b>



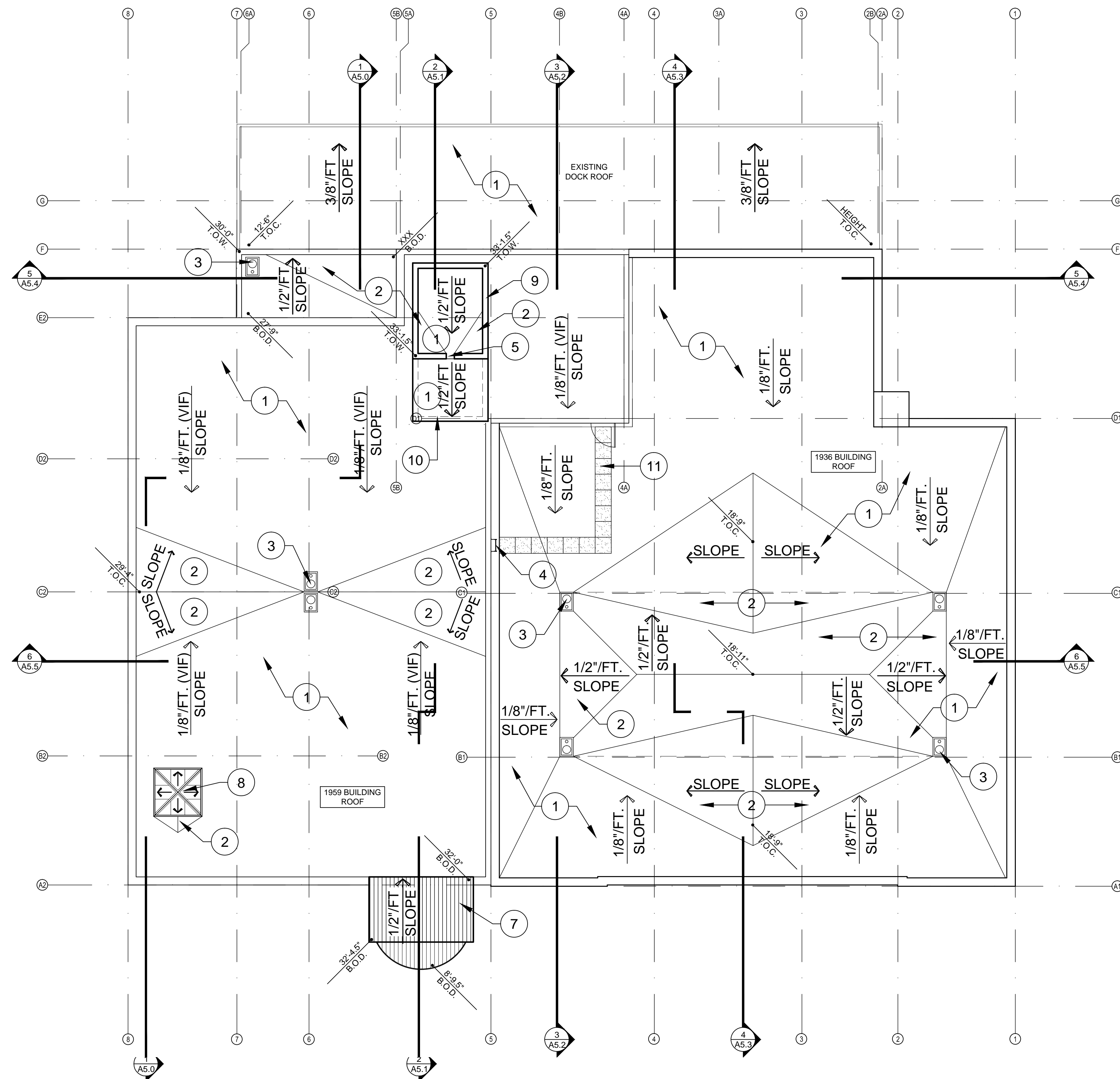


**3 BUILDING SECTION '3'**  
SCALE: 3/16" = 1'-0"

**NEW KEYNOTES (X)**

- |   |   |   |
|---|---|---|
| 1. EXIST CMU WALL, SEE FLOOR PLANS                          | 11. EXIST STEEL BEAM  | 19. NEW ROOF SYSTEM OVER NEW TAPERED INSULATION OVER EXIST ROOF DECK                        |
| 2. EXIST CONC WALL, SEE FLOOR PLANS                         | 12. EXIST WINDOW WELL   | 20. NEW PARTITION WALL, SEE FLOOR PLAN  |
| 3. EXIST COMPOSITE METAL DECK AND CONC FLOOR OR ROOF SYSTEM | 13. EXIST 6" RAISED CONC FLOOR SLAB   | 21. NEW FURRING AT EXIST EXTERIOR WALL, SEE FLOOR PLANS                                     |
| 4. EXIST PRECAST CONC AND CONC FLOOR SYSTEM                 | 14. CAP EXIST DRAIN AT EXIST WINDOW WELL                                    | 22. NEW UNISTRUT GRID ELEMENT FOR DISPLAY LIGHTING, SEE ELECTRICAL DWGS                     |
| 5. EXIST CONC SLAB  | 15. NEW SLAB IMPROVEMENT AND / OR FLOOR FINISH AS PER SHEET A1.1A AND A1.1B | 23. CEILING SYSTEM AS SCHEDULED, SEE INTERIOR FINISHES SCHEDULE AND REFLECTED CEILING PLANS |
| 6. EXIST STEEL FLOOR OR ROOF JOIST                          | 16. EXTEND CONC RETAINING WALL AT EXTERIOR WINDOW WELL AS PER DETAIL        | 24. NEW BATT INSULATION   |
| 7. EXIST WINDOW   | 17. NEW STEEL AND GLASS ENTRY CLOSURE PANEL AT EXIST WINDOW WELL            | 25. ROOF / PARAPET BEYOND   |
| 8. EXIST CONC WALL FOOTER                                   | 18. NEW METAL FRAMED MARQUEE ELEMENT, SEE STRUCTURAL DWGS                   | 26. NEW OVERHEAD COILING DOOR   |
| 9. EXIST STEEL COLUMN                                       |   |   |
| 10. EXIST CONC BEAM   |   |   |

	<b>HISTORICSTREETSCAPES PLLC</b> ARCHITECTURE.PLANNING.ART.HISTORIC PRESERVATION 1711 EAST BROWN ROAD MESA, ARIZONA 85201 OFFICE PHONE 480.649.4450 CELL 602.309.3524	
	<b>Saemisch + Di Bella</b> ARCHITECTS INC. 48 West Main Street Suite 200 Mesa, Arizona 85201 480-655-0633v 480-655-0632f www.sdarch.com SDA JOB NO. 1907	
<b>CITY OF MESA</b> <b>ENGINEERING DEPARTMENT</b> <b>Federal Building Adaptive Re-Use</b>		
DRAWN BY: AP ARCHITECT: RLP APPROVED BY: F. Rustam	<b>BUILDING SECTIONS</b>	<b>A5.2</b>
W.O. - PROJ NO. CP0213	SHEET <b>54 of 120</b>	CATALOG NUMBERS <b>A-171251</b>



**ROOF PLAN**  
SCALE: 1/8" = 1'-0"



**NEW KEYNOTES** (X) (ALL MAY NOT APPLY)

1. NEW ROOF SYSTEM
2. NEW ROOF CRICKET
3. NEW ROOF DRAIN AND OVERFLOW DRAIN - SEE PLUMBING DRAWINGS
4. NEW ROOF ACCESS LADDER - SEE DETAIL SHEETS
5. NEW ROOF SCUPPER
6. NEW ROOF VENT, SEE MECHANICAL DRAWINGS
7. NEW METAL ROOF PANELS
8. NEW SKYLIGHT
9. NEW CMU WALL AT NEW ELEVATOR SHAFT
10. NEW WALL BELOW SHOWN DASHED
11. NEW WALK PAD MATERIAL

**NOTE:**

T.O.W. = TOP OF WALL  
B.O.D. = BOTTOM OF DECK  
T.O.C. = TOP OF CRICKET

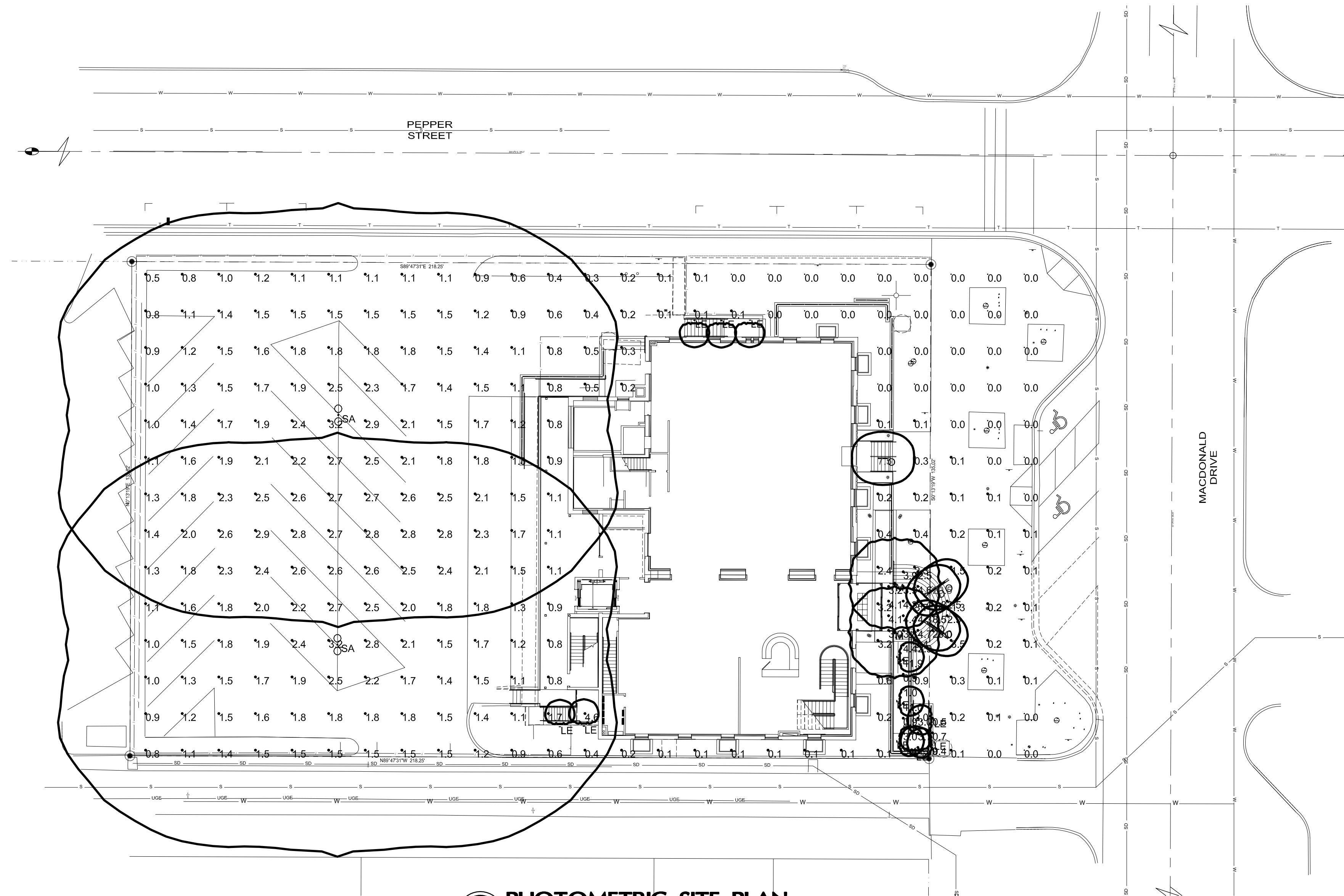
	<b>HISTORICSTREETSCAPES PLLC</b> ARCHITECTURE.PLANNING.ART.HISTORIC PRESERVATION 1711 EAST BROWN ROAD MESA, ARIZONA 85203 OFFICE PHONE 480.649.4450 CELL 602.309.3524	
	<b>Saemisch + Di Bella</b> ARCHITECTS INC. 48 West Main Street Suite 200 Mesa, Arizona 85201 480-655-0633v 480-655-0632f www.sdash.com SQA JOB NO. 1907	
CITY OF MESA ENGINEERING DEPARTMENT		
Federal Building Adaptive Re-Use		
DRAWING ROOF PLAN		<b>A4.0</b>
SHEET 50 of 120		CATALOG NUMBERS A-171247

W.O. -  
PROJ NO. CP0213

DRAWN BY: AP  
ARCHITECT: RLP  
APPROVED BY: F. Rustam







**PHOTOMETRIC SITE PLAN**  
SCALE 1" = 20'-0"  
NORTH

STATISTICS						
Description	Symbol	Avg	Max	Min	Max/Min	Avg/Min
SITE FC VALUES	+	1.2 fc	7.5 fc	0.0 fc	N/A	N/A
WALKWAYS(Copy)	+	5.1 fc	20.5 fc	0.4 fc	51.3:1	12.8:1

LUMINAIRE SCHEDULE								
Symbol	Label	Qty	Catalog Number	Description	Lamp	File	Lumens	LF/F
—	LE	11	BEGA 2382LED	STEPLIGHT MOUNTED AT 18 INCHES	5 WHITE LEDS	2382LED.lvs	Absolute	0.81
□	M	2	BEGA 8679P	ENTRYWAY BOLLARDS	(1) 80W CF TWIN-4P	8679P.lvs	6000	0.81
	N	0	LUMENPULSE LUDS-WM404S-DRGB-RGB-DIM1FX	MILLION MOUNTED LINEAR RGB FUTURE WITH INDEPENDANT UPLIGHT AND DOWNLIGHT DMX CONTROL	RGB LED DIRECT AND INDIRECT	S1204062_LL12-120-48-27K-WL1-ESTIMAT	Absolute	0.81
	O	5	INTENSE IVR2 SPS BY P564H040-60SYM	ILLUMINATED HANDRAIN ON ELEVATOR EMERGENCY INVERTER	LED	IVR238-H040-60SYM.lvs	Absolute	0.81
—	EMI	0	EVENLITE PW12SLC	EMERGENCY INVERTER FOR TYPE KE AND O	NA	2382LED.lvs	Absolute	1.00
○	SA	2	LITHONIA MR2 LED 2 308700340K S93 MVOLT SSS22.5	FULL CUTOFF TWIN MOUNTED LED AREA LIGHT MOUNTED AT 25 FT AFG	4000K LED	MR2_LED_2_3 68100_AIK_5 R3_LMVOLT.lvs	Absolute	0.81

Two working days before you dig.  
CALL FOR THE BLUE STAKES

**263-1100**

Blue Stake Center  
CALL COLLECT

CALL TWO WORKING DAYS BEFORE YOU DIG. BLUE STAKE CENTER  
**602-263-1100**  
OR 811  
3RD DISTRICT MARIQUA COUNTY

**HISTORICSTREETSCAPES PLLC**  
ARCHITECTURE.PLANNING.ART.HISTORIC PRESERVATION  
1711 EAST BROWN ROAD MESA, ARIZONA 85203  
OFFICE PHONE 480.648.4450 CELL 602.309.3524

**Saemisch + Di Bella**  
ARCHITECTS INC  
48 West Main Street Suite 200 Mesa, Arizona 85201  
480-655-0633v 480-655-0632f www.sdarch.com  
SQA JOB NO. 1907

CITY OF MESA  
ENGINEERING DEPARTMENT  
Federal Building Adaptive Re-Use

PHOTOMETRIC SITE PLAN  
DRAWING  
**E1.1**

SHEET **99 of 120**  
CATALOG NUMBERS  
**A-171296**

PROFESSIONAL CONSULTING ENGINEERS, INC.  
3034 N. 23rd Avenue, Suite 9B, Phoenix, AZ 85021  
Phone (602) 674-9414 Fax (602) 674-9514  
Email pce@pcephx.com PCE Job # 13016

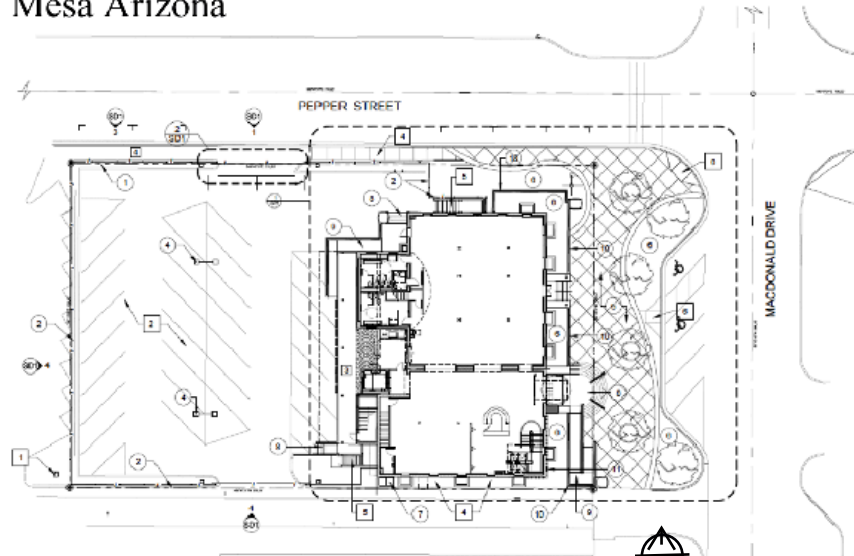


# CITY OF MESA FEDERAL BUILDING ADAPTIVE USE

MUSEUM AND CULTURAL RESOURCES EXPANSION

26 NORTH MacDONALD STREET

Mesa Arizona



FEDERAL BUILDING SITE PLAN



FEDERAL BUILDING LANDSCAPE PLAN

DRB CASE NO.

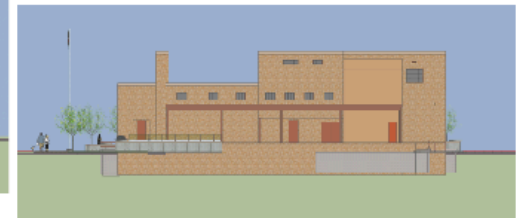
HISTORICSTREETSCAPES ARCHITECTURE



PERSPECTIVE VIEW



East Elevation



West Elevation



North Elevation



South Elevation

SAEMISCH + DiBELLA

CONCORD CONSTRUCTION





Recessed wall luminaires with directed light

**Housing:** Constructed of die-cast aluminum with integral wiring compartment. Mounting tabs provided. Die castings are marine grade, copper free ( $\leq 0.3\%$  copper content) A360.0 aluminum alloy.

**Enclosure:** One piece die-cast aluminum faceplate. Clear tempered glass; .125" thick, machined flush to faceplate surface. Faceplate is secured by two (2) flush, socket head, stainless steel captive screws threaded into stainless steel inserts in the housing casting. Continuous high temperature, molded silicone rubber gasket for weather tight operation.

**Electrical:** 5.6W LED luminaire, 7.5 total system watts, -25° C start temperature. Integral 120 V through 277 V electronic LED driver, 0 -10V dimming. The LED and driver are mounted on a removable plate for easy replacement. Standard LED color temperature is 3000K (available in 4000K; add suffix K4).

**Note:** Due to the dynamic nature of LED technology, LED luminaire data on this sheet is subject to change at the discretion of BEGA-US. For the most current technical data, please refer to [www.bega-us.com](http://www.bega-us.com).

**Finish:** All BEGA standard finishes are polyester powder coat with minimum 3 mil thickness. Available in four standard BEGA colors: Black (BLK); White (WHT); Bronze (BRZ); Silver (SLV). To specify, add appropriate suffix to catalog number. Custom colors supplied on special order.

UL listed for US and Canadian Standards, suitable for wet locations and for installation within 3 feet of ground. IC rated. Protection class: IP65.

**Luminaire Lumens:** 155  
Tested in accordance with LM-79-08

Type:  
BEGA Product:  
Project:  
Voltage:  
Color:  
Options:  
Modified:



		Lamp	A	B	C
2382 LED	ADA	5.6 W LED 65%	2 3/4	2 1/2	







Date: \_\_\_\_\_ Type: \_\_\_\_\_

Firm Name: \_\_\_\_\_

Project: \_\_\_\_\_

# Inground Enclosure

For Graze Powercore fixtures

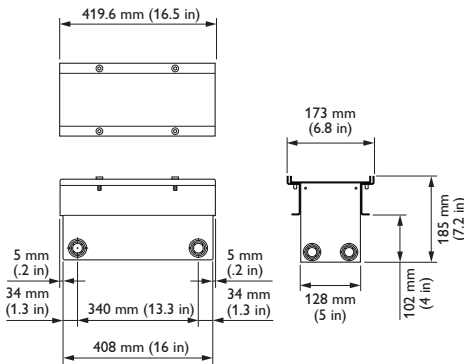
Outdoor rated enclosure for ground recessed lighting applications

The Inground Enclosure for Graze Powercore fixtures enables ground recessed lighting applications using any fixture in the Graze Powercore family. A sealed and pressure tested glass cover protects fixtures from both walkover impact and water damage while a field adjustable mounting base can be tilted up to 15° without interrupting the beam pattern making the enclosure both durable and flexible.

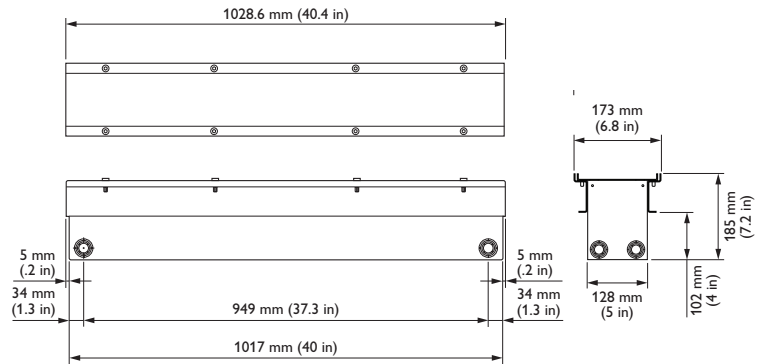
- Keeps grazing fixtures out of view for outdoor applications and high traffic areas.

- Convenient field adjustable tilting mechanism gives you the flexibility to change the angle of the fixture by  $\pm 15^\circ$  without disturbing the beam.
- IK10 impact glass cover ensures outdoor rated sturdiness and prevents water from leaking into the enclosure.
- Available in four standard lengths—305 mm (12 in), 610 mm (24 in), 914 mm (36 in) and 1219 mm (48 in) designed to accommodate all four available lengths of Graze Powercore fixtures.

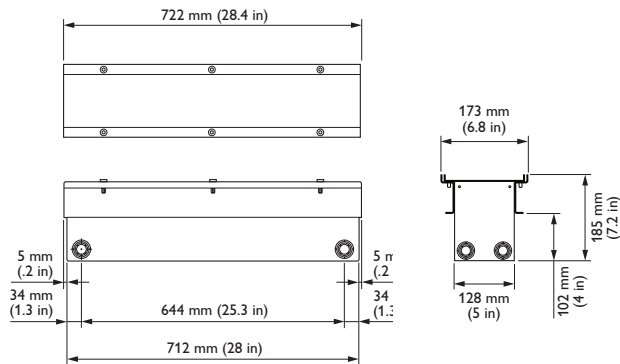
## 305 mm (12 in) Enclosure



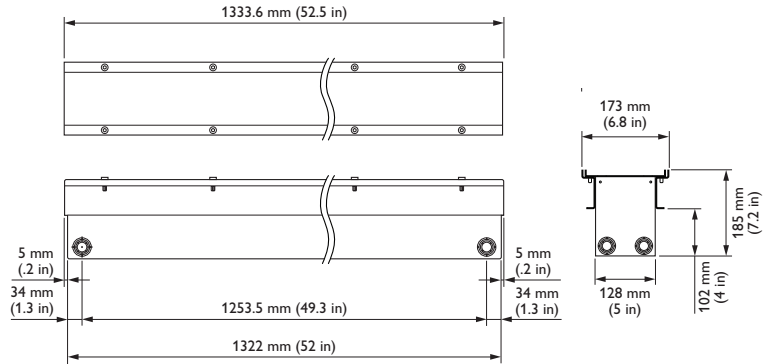
## 610 mm (24 in) Enclosure



## 914 mm (36 in) Enclosure



## 1219 mm (48 in) Enclosure



**PHILIPS**



## Specifications

Due to continuous improvements and innovations, specifications may change without notice.

Item	Specification	305 mm (12 in)	610 mm (24 in)	914 mm (36 in)	1219 mm (48 in)
Physical	Dimensions (Height x Width x Depth)	418 x 187 x 173 mm (16.5 x 7.4 x 6.8 in)	722 x 187 x 173 mm (28.4 x 7.4 x 6.8 in)	1027 x 187 x 173 mm (40.4 x 7.4 x 6.8 in)	1332 x 187 x 173 mm (52.4 x 7.4 x 6.8 in)
	Weight	Inner Box 4.3 kg (9.5 lb) Outer Box 4.1 kg (9 lb)	Inner Box 7.3 kg (16.1 lb) Outer Box 6.5 kg (14.3 lb)	Inner Box 10.4 kg (22.9 lb) Outer Box 8.8 kg (19.4 lb)	Inner Box 13.4 kg (29.5 lb) Outer Box 11.2 kg (24.7 lb)
	Impact Rating	IK10, Walkover grade			
	Housing	Stainless steel			
	Glass	12 mm tempered clear glass			
	Temperature *	100° C (212° F) Maximum Surface Temperature    50° C (122° F) Maximum Ambient Temperature			
Certification and Safety	Conduit Opening	¾ in US Trade Size or 40 mm (1.75 in), outer diameter			
	Certification	UL, CE			
	Environment	Dry / Damp / Wet Location, IP67			

\* Fixtures must be ordered separately. Please refer to the fixture specific Product Guide for all specifications including operating temperature ranges and thermal management.



## Ordering Information

To order an Inground Enclosure for Graze Powercore you will need to order both the inner and outer box from the part numbers listed below in addition to either a UL or CE leader cable to wire each fixture into the junction box provided as part of the inner box.†

## Enclosure

Item	Item Number	Philips 12NC	Description
Outer Box	120-000190-01	912400133685	Inground Enclosure, Outer Box for 305 mm (12 in) fixture
	120-000190-03	912400133687	Inground Enclosure, Outer Box for 610 mm (24 in) fixture
	120-000190-05	912400133689	Inground Enclosure, Outer Box for 914 mm (36 in) fixture
	120-000190-07	912400133691	Inground Enclosure, Outer Box for 1219 mm (48 in) fixture
Inner Box	120-000-190-00	912400133684	Inground Enclosure, Inner Box for 305 mm (12 in) fixture
	120-000-190-02	912400133686	Inground Enclosure, Inner Box for 610 mm (24 in) fixture
	120-000-190-04	912400133688	Inground Enclosure, Inner Box for 914 mm (36 in) fixture
	120-000-190-06	912400133690	Inground Enclosure, Inner Box for 1219 mm (48 in) fixture

Use Item Number when ordering in North America.

## Leader Cables

Item Number	Philips 12NC	Description
108-000055-09	912400134321	Leader Cable, 1.52 m (5 ft), UL, for Inground Enclosure
108-000055-10	912400134322	Leader Cable, 1.52 m (5 ft), CE, for Inground Enclosure

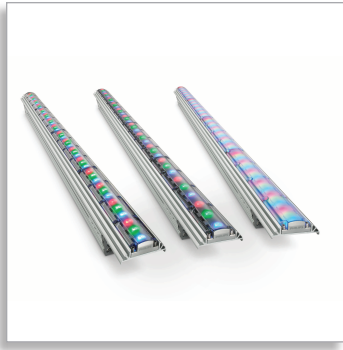
Use Item Number when ordering in North America.

† In order to connect Inground Enclosure to Inground Enclosure the appropriate AWG wiring with a diameter of 10-14 mm (0.39-0.55 in) will need to be purchased from a third-party. For Color and Intelligent White fixtures specify 4 Conductor 12 AWG (4 x 2.5 mm) wire. For a eW Fixtures specify 3 Conductor 12 AWG (3 x 2.5 mm) wire.

Copyright © 2015 Philips Solid-State Lighting Solutions, Inc. All rights reserved. Chromacore, Chromasic, CK, the CK logo, Color Kinetics, the Color Kinetics logo, ColorBlast, ColorBlaze, ColorBurst, ColorGraze, ColorPlay, ColorReach, iW Reach, eW Reach, DiMand, EssentialWhite, eW, iColor, iColor Cove, IntelliWhite, iW, iPlayer, Optibin, and Powercore are either registered trademarks or trademarks of Philips Solid-State Lighting Solutions, Inc. in the United States and / or other countries. All other brand or product names are trademarks or registered trademarks of their respective owners. Due to continuous improvements and innovations, specifications may change without notice. DAS-000149-01 R01 18 Nov 2015



Philips Color Kinetics  
3 Burlington Woods Drive  
Burlington, Massachusetts 01803 USA  
Tel 888.385.5742  
Tel 617.423.9999  
Fax 617.423.9998  
www.philipscolorkinetics.com  
@colorkinetics



Date: \_\_\_\_\_ Type: \_\_\_\_\_

Firm Name: \_\_\_\_\_

Project: \_\_\_\_\_

# ColorGraze Powercore Family

Linear exterior LED wall grazing fixtures with intelligent color light

## Custom Configurations

Select one component from each column to specify a complete configuration.

Fixture Length	Channel 1	Channel 2	Channel 3	Beam Angle*	Housing Color
1 ft	Red	Red	Red	9° x 9°	RAL 9006
2 ft	Green	Green	Green	15° x 30°	Any RAL CLASSIC color except whites
3 ft	Blue	Blue	Blue	10° x 60°	
4 ft	Amber	Amber	Amber	30° x 60°	
	Royal Blue	Royal Blue	Royal Blue	60° x 30°	
	2700 K	2700 K	2700 K	60° x 60°	
	3000 K	3000 K	3000 K	60° x 90°	
	3500 K	3500 K	3500 K	90° x 60°	
	4000 K	4000 K	4000 K		
	5500 K	5500 K	5500 K		
	6500 K	6500 K	6500 K		

\* MX / QLX / QLX 5W only.

= Standard component

Limited quantity of samples available.

## Standard Configurations

If you select all standard components (shaded red), find your configuration in the standard configurations list, and order using the Item Number or Philips 12NC. Standard configurations are not subject to minimum order quantities or extended production lead times.

### Standard Configuration Example:

ColorGraze MX Powercore, 2 ft, Red, Green, Blue, 10° x 60°

(Use Item Number 123-000079-06 or Philips 12NC 910503703335)

## Custom Configurations

If you select one or more non-standard (non-shaded) components, your configuration is custom.

Minimum Order Quantity: 100 ft total, any mix of fixture lengths

Production Lead time: 12 weeks ARO (standard shipping options apply)

### Custom Configuration Example:

Special, ColorGraze QLX Powercore, 4 ft, Red, Royal Blue, 3500 K, 60° x 60°, RAL 6037

(Contact your Philips Color Kinetics Lighting Sales group with the product description for custom configurations.)

In North America contact: Philips Color Kinetics Sales, 888.385.5742 or sales@colorkinetics.com

# PHILIPS



## Accessories and Data Enabler Pro

Item	Type	Size	Item Number	Philips 12NC
Leader Cable with Terminator	UL / cUL	10 ft (3.0 m)	108-000055-03	910503704066
		50 ft (15.2 m)	108-000055-00	910503703137
	CE / PSE	10 ft (3.0 m)	108-000055-04	910503704067
		50 ft (15.2 m)	108-000055-01	910503704064
Jumper Cable	UL / cUL	End-to-End	108-000057-00	910503703139
		1 ft (305 mm)	108-000057-03	910503704076
		5 ft (1.5 m)	108-000057-06	910503704079
		10 ft (3.0 m)	108-000057-09	910503704082
	CE / PSE	End-to-End	108-000057-01	910503704074
		1 ft (305 mm)	108-000057-04	910503704077
		5 ft (1.5 m)	108-000057-07	910503704080
		10 ft (3.0 m)	108-000057-10	910503704083
Glare Shield		1 ft (305 mm)	120-000081-00	910503700745
		2 ft (610 mm)	120-000081-01	910503700746
		3 ft (914 mm)	120-000081-02	910503700747
		4 ft (1219 mm)	120-000081-03	910503700748
Additional Terminators		Quantity 10	120-000157-00	910503703142
Additional Hinge		Quantity 1	120-000098-00	910503700772
Data Enabler Pro	3/4 in / 1/2 in NPT (U.S. trade size conduit)		106-000004-00	910503701210
	PG21 / PG13 (metric size conduit)		106-000004-01	910503701211

Use Item Number when ordering in North America.

CHROMACORE<sup>®</sup> CK TECHNOLOGY | OPTIBIN<sup>®</sup> CK TECHNOLOGY | POWERCORE<sup>®</sup> CK TECHNOLOGY

\* For more information on how to buy Philips Color Kinetics LED lighting systems, visit [www.philipscolorkinetics.com/ls/howtobuy/](http://www.philipscolorkinetics.com/ls/howtobuy/)

## Features

The new ColorGraze Powercore family dramatically extends the range and flexibility of the popular line of high-performance, full-color LED grazing fixtures from Philips Color Kinetics. These intelligent, high-performance fixtures offer intensely saturated full-color light output in a range of fixture lengths, beam angles, output levels, and power consumption levels. Low-profile housing, connectorized cabling, a universal power input range, and direct line-voltage operation make ColorGraze Powercore fixtures easy to install and operate.

- Tailor light output to specific applications
- High-performance illumination and beam quality
- Universal power input range, directly from line voltage
- Versatile installation options
- Superior color consistency and accuracy
- Industry-leading control
- Trouble-free, code-compliant installation

## Special Color Specifications

Standard ColorGraze Powercore configurations use three channels of LEDs — Red, Green, and Blue — to produce a full range of 16.7 million additive RGB colors. With custom configurations, you can support special applications by exchanging the LEDs in any or all of the three channels.

Available LEDs include white-light LEDs in seven color temperatures, ranging from a warm 2700 K to a cool 6500 K, or with Royal Blue, Blue, Green, Amber, or Red LEDs.

Color	Dominant Wavelength Range (nm)
Royal Blue	450 – 465
Blue	465 – 485
Green	520 – 535
Amber	585 – 595
Red	620 – 630

For detailed product information, please refer to the ColorGraze Powercore Family Product Guide at [www.philipscolorkinetics.com/ls/rgb/colorgrazemxpowercore/](http://www.philipscolorkinetics.com/ls/rgb/colorgrazemxpowercore/)



Philips Color Kinetics  
3 Burlington Woods Drive  
Burlington, Massachusetts 01803 USA  
Tel 888.385.5742  
Tel 617.423.9999  
Fax 617.423.9998  
[www.philipscolorkinetics.com](http://www.philipscolorkinetics.com)

Copyright © 2013 Philips Solid-State Lighting Solutions, Inc. All rights reserved.  
Chromacore, Chromasic, CK, the CK logo, Color Kinetics, the Color Kinetics logo, ColorBlast, ColorBlaze, ColorBurst, eW Fuse, ColorGraze, ColorPlay, ColorReach, iW Reach, eW Reach, DIMand, EssentialWhite, eW, iColor, iColor Cove, IntelliWhite, iW, iPlayer, Optibin, and Powercore are either registered trademarks or trademarks of Philips Solid-State Lighting Solutions, Inc. in the United States and / or other countries. All other brand or product names are trademarks or registered trademarks of their respective owners. Due to continuous improvements and innovations, specifications may change without notice. DAS-000107-51 R00 04-13

## FEATURES & SPECIFICATIONS

**INTENDED USE** — For building- and wall-mounted applications.

**CONSTRUCTION** — Rugged, die-cast, single-piece aluminum housing. Die-cast doorframe has 1/8" thick tempered glass lens. Doorframe is fully gasketed with one-piece solid silicone.

Finish: Standard finish is textured dark bronze (DDBT) corrosion-resistant polyester powder finish. Additional architectural colors are available. Striping is also available.

**OPTICS** — Segmented reflectors for superior uniformity and control. Medium throw (MD) full cutoff downlight distribution available. Two uplight distributions available: MDU (medium throw, 10% up), and MDUS (up/down medium throw, 50% up 50% down).

**ELECTRICAL** — Ballast: Class P, multi-volt electronic, high power factor, <10%THD, with starting temperature of 0°F (-18°C).

Socket: High temperature thermoplastic with integral lamp retention clip.

**INSTALLATION** — Universal mounting mechanism with integral mounting support allows fixture to hinge down.

**LISTINGS** — UL Listed (standard). CSA Certified (see Options). Suitable for wet locations (damp location listed in lens-up orientation). WLU option offers wet location listing in up orientation (see Options). IP65 Rated. 25°C ambient. ELED: U.S. Patent No. 7,737,640.

**WARRANTY** — 1-year limited warranty. Complete warranty terms located at

[www.acuitybrands.com/CustomerResources/Terms\\_and\\_conditions.aspx](http://www.acuitybrands.com/CustomerResources/Terms_and_conditions.aspx)

NOTE: Actual performance may differ as a result of end-user environment and application.

Specifications subject to change without notice.

Catalog Number
Notes
Type

### Decorative Wall-Mounted Lighting



# WSR

COMPACT FLUORESCENT:  
26W DTT  
26W-42W TRT

#### Specifications

Length: 18 (45.7)

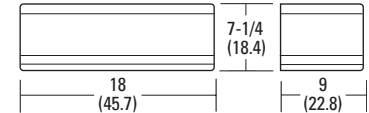
Depth: 9 (22.8)

Overall Height: 7-1/4 (18.4)

\*Weight: 30 (13.6 kg)

All dimensions are inches (centimeters) unless otherwise indicated.

\*Weight as configured in example below.



Consistent with LEED® goals & Green Globes™ criteria for light pollution reduction

### ORDERING INFORMATION

For shortest lead times, configure product using **standard options (shown in bold)**.

**Example:** WSR 42TRT MD MVOLT LPI

WSR						
Series	Wattage	Distribution	Voltage	Ballast	Mounting	Options
<b>WSR</b>	26DTT 2/26DTT 26TRT 2/26TRT 32TRT 2/32TRT <b>42TRT</b> <b>2/42TRT</b>	<u>Downlight distributions</u> <b>MD</b> Medium throw <u>Up/down distributions</u> <b>MDU</b> Medium throw with 10% uplight (coated lamp std.) <b>MDUS</b> Up/down medium throw with 50% uplight and 50% downlight (coated lamp std.)	<b>120</b> <b>277</b> <b>347</b> <b>MVOLT<sup>1</sup></b>	<b>(blank)</b> Electronic 0° F	<b>(blank)</b> Surface mount <u>Shipped separately<sup>2</sup></u> BBW Surface mount back box UT5 Uptilt 5 degrees	<u>Shipped installed in fixture</u> DC12 Emergency circuit 12-volt (35W lamp included) <sup>3</sup> 2DC12 Emergency circuit 12-volt (two 35W lamps included) <sup>3</sup> DC2012 Emergency circuit 12-volt (20W lamp included) <sup>3</sup> 2DC2012 Emergency circuit 12-volt (two 20W lamps included) <sup>3</sup> DFL Diffusing lens

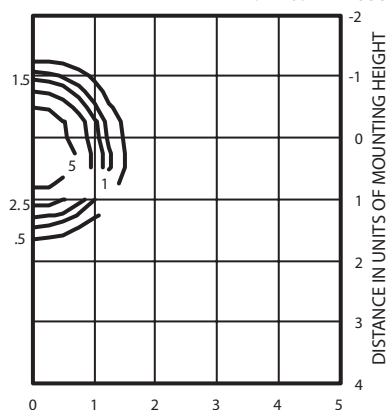
Options (continued)						Finish <sup>17</sup>	Lamp <sup>19</sup>
EC	Emergency circuit <sup>4</sup>	GMF	Internal slow-blow fusing <sup>8,9</sup>	<u>Shipped separately<sup>16</sup></u>		<b>(blank)</b> Dark bronze, textured	<b>LPI</b> Lamp included <b>L/LP</b> Less lamp
<b>ELDW</b>	Emergency battery pack (32°F min. operating temp.) <sup>5,6,7,8</sup>	<b>PE</b>	Photoelectric cell-button type <sup>9,16</sup>	WG	Wire guard	DSST Sandstone, textured	
ELDW	Emergency battery pack (0°F min. operating temp.) <sup>5,7,8,9,10,11</sup>			VG	Vandal guard	<b>DNAT</b> Natural aluminum, textured	
ELDW RPS	Fixture wired ready for PS1400 or PSDL remote battery pack (battery pack not included; 32° min. operating temp) <sup>9,12,13</sup>	WLU	Wet location door for up orientation			<b>DWHG</b> White, textured	
ELED	Emergency LED secondary source battery pack with time delay (-4°F min. operating temperature) <sup>14,15</sup>	<b>CSA</b>	CSA certified			<b>DBLB</b> Black, textured	
2ELED	Emergency LED secondary source (two modules) battery pack with time delay (-4°F min. operating temperature) <sup>14,15</sup>	NOM	NOM certified			CRT Non-stick protective coating <sup>18</sup>	
						<u>Super Durable Finishes</u>	
						DDBXD Dark bronze	
						DBLXD Black	
						DNAXD Natural aluminum	
						DWHXD White	
						DDBTXD Textured dark bronze	
						DBLBXD Textured black	
						DNATXD Textured natural aluminum	
						DWHGXD Textured white	



# WSR Fluorescent Wall Mounted

## WSR 2/42TRT MD

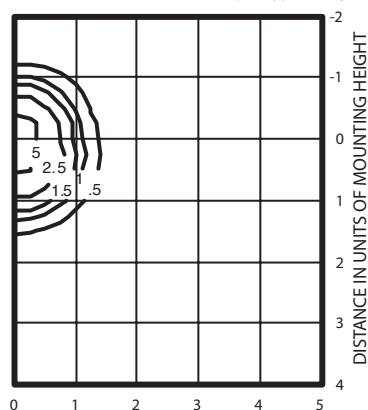
ISOILLUMINANCE PLOT (Footcandle) TEST NO: LTL11338



2/42TRT lamp, horizontal lamp orientation  
Footcandle values based on 12' mounting height,  
3200 rated lumens (per lamp).  
Luminaire Efficiency: 49.6%

## WSR 2/42TRT MDU

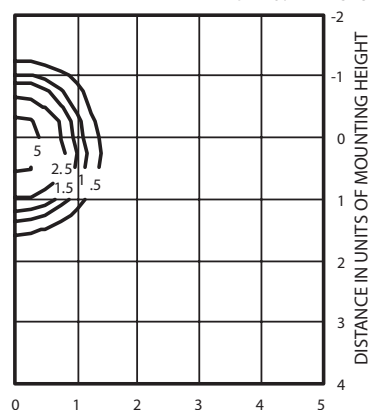
ISOILLUMINANCE PLOT (Footcandle) TEST NO: LTL11314



2/42TRT lamp, horizontal lamp orientation  
Footcandle values based on 12' mounting height,  
3200 rated lumens (per lamp).  
Luminaire Efficiency: 40.6%

## WSR 2/42TRT MDU5

ISOILLUMINANCE PLOT (Footcandle) TEST NO: LTL11315



2/42TRT lamp, horizontal lamp orientation  
Footcandle values based on 12' mounting height,  
3200 rated lumens (per lamp).  
Luminaire Efficiency: 63.6%

Lamp	Initial Lumens	Mounting Height			
		10'	12'	14'	16'
Compact Fluorescent					
42W TRT	3,200	0.72	0.5	0.37	0.28
(2) 42W TRT	6,400	1.44	1.0	0.73	0.56

### Emergency Option Lamp Compatibility

Lamp options # of lamps/wattage	DC12	2DC12	DC2012	2DC2012	EC	ELED	2ELED	ELDW	ELDWC	ELDWRPS
26DTT (1 lamp)	■	■	■	■	■	■	■	■	■	■
2/26DTT	■	■	■	■	■	■	■	■	■	■
26TRT (1 lamp)	■	■	■	■	■	■	■	■	■	■
2/26TRT	■	■	■	■	■	■	■	■	■	■
32TRT (1 lamp)	■	■	■	■	■	■	■	■	■	■
2/32TRT	■	■	■	■	■	■	■	■	■	■
42TRT (1 lamp)	■	■	■	■	■	■	■	■	■	■
2/42TRT	■	■	■	■	■	■	■	■	■	■

### Notes

- Multi-volt electronic ballast capable of operating on any line voltage from 120-277V.
- May be ordered as an accessory with prefix "WS". Must specify finish.
- Not available with GMF, EC, ELDWs.
- Maximum allowable wattage lamp included.
- One lamp operates during emergency mode. For more information, see the [Reference Guide](#).
- ELDW and ELDWC with compact fluorescent do not satisfy North Carolina code criteria for state owned buildings per 2012 NC Building Code: 1006.3 and 1006.4.
- Not available with 2/32TRT or 2/42TRT.
- Not available with DCs or EC.
- Not available with MVOLT; must specify voltage.
- Not available with 2/26DTT or 2/26TRT.
- For MD only.
- With ELDWRPS (remote) battery packs, light output is evenly divided between the lamps in emergency mode.
- Not available with 2/42TRT.
- Not available with EC, DCs or ELDWs.
- Must specify 120V or 277V.
- Must be ordered with fixture; cannot be field installed.
- See [www.lithonia.com/archcolors](http://www.lithonia.com/archcolors) for additional color options.
- Black finish only.
- Must be specified (35K lamp with LPI).



# MR2 LED LED Area Luminaire



## Specifications

<b>EPA:</b>	0.9 ft <sup>2</sup> (0.08 m <sup>2</sup> )
<b>Length:</b>	32-7/8" (83.5 cm)
<b>Width:</b>	25" (63.5 cm)
<b>Height:</b>	8-1/4" (21.0 cm)
<b>Weight (max):</b>	42 lbs (19.1 kg)



Catalog  
Number

Notes

Type

Hit the Tab key or mouse over the page to see all interactive elements.

## Introduction

The Omero™ family of luminaires blends a traditional round dayform with contemporary, low-profile styling to accent architectural elements in a variety of applications.

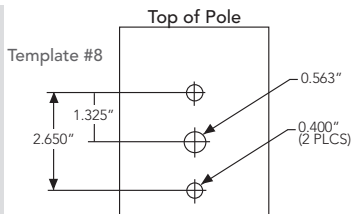
The MR2 LED combines the latest in LED technology with the designer aesthetic of the Omero™ family for stylish, high-performance illumination that lasts. The MR2 LED is ideal for replacing 250-400W metal halide in area lighting applications with typical energy savings of 65% and expected service life of over 100,000 hours.

## Ordering Information

**EXAMPLE:** MR2 LED 60C 1000 40K T5M MVOLT SPA DDBXD

MR2 LED	60C							
Series	LEDs	Drive current	Color temperature	Distribution	Voltage	Mounting	Options	Finish (required)
MR2 LED	60C 60 LEDs	700 700 mA 1000 1000 mA	40K 4000 K 50K 5000 K	T2M Type II T3M Type III T4M Type IV T5M Type V TFTM Forward throw	MVOLT <sup>1</sup> 120 <sup>1</sup> 208 <sup>1</sup> 240 <sup>1</sup> 277 <sup>1</sup> 347 480	<b>Shipped included</b> SPA Square pole mounting RPA Round pole mounting WBA Wall bracket <b>Shipped Separately<sup>2</sup></b> SPUMBA Square pole universal mounting adaptor <sup>3</sup> RPUMBA Round pole universal mounting adaptor <sup>3</sup> KMA8 Mast arm mounting bracket adaptor (specify finish) <sup>4</sup>	<b>Shipped installed</b> PER NEMA twist-lock receptacle only (no controls) DCR Dimmable and controllable via ROAM® (no controls) <sup>5</sup> DMG 0-10V dimming driver (no controls) HS House-side shield <sup>2</sup> SF Single fuse (120, 277, 347V) <sup>6</sup> DF Double fuse (208, 240, 480V) <sup>6</sup> DS Dual switching <sup>7,8</sup> BL30 Bi-level switched dimming, nominal 30% <sup>8,9</sup> BL50 Bi-level switched dimming, nominal 50% <sup>8,9</sup> <b>Shipped separately<sup>2</sup></b> VG Vandal guard	DDBXD Dark bronze DBLXD Black DNAXD Natural aluminum DWHXD White DDBTXD Textured dark bronze DBLBXD Textured black DNATXD Textured natural aluminum DWHGXD Textured white

## Drilling



## Accessories

DLL127F 1.5 JU	Photocell - SSL twist-lock (120-277V) <sup>10</sup>
DLL347F 1.5 CUL JU	Photocell - SSL twist-lock (347V) <sup>10</sup>
DLL480F 1.5 CUL JU	Photocell - SSL twist-lock (480V) <sup>10</sup>
SCU	Shorting cap <sup>10</sup>
MR2LEDHS U	House-side shield (includes 2 shields)
MR2VG U	Vandal guard accessory
KMA8 DDBXD U	Mast arm mounting bracket adaptor (specify finish) <sup>4</sup>
RPUMBA DDBXD U*	Round and square pole universal mounting bracket adaptor (specify finish)

For more control options, visit [DTL](#) and [ROAM](#) online.

Omero™ shares a unique drilling pattern with the AERIS™ family. Specify this drilling pattern when specifying poles, per the table below.

DM19AS	Single unit	DM29AS	2 at 90° *
DM28AS	2 at 180°	DM39AS	3 at 90° *
DM49AS	4 at 90° *	DM32AS	3 at 120° **

**Example:** SSA 20 4C DM19AS DDBXD

Visit Lithonia Lighting's [POLES CENTRAL](#) to see our wide selection of poles, accessories and educational tools.

\*Round pole top must be 3.25" O.D. minimum.

\*\*For round pole mounting (RPA) only.

## Tenon Mounting Slipfitter\*\*

Tenon O.D.	Single Unit	2 at 180°	2 at 90°	3 at 120°	3 at 90°	4 at 90°
2-3/8"	AST20-190	AST20-280	N/A	N/A	N/A	N/A
2-7/8"	AST25-190	AST25-280	N/A	AST25-320	N/A	N/A
4"	AST35-190	AST35-280	AST35-290	AST35-320	AST35-390	AST35-490

## NOTES

- MVOLT driver operates on any line voltage from 120-277V (50/60 Hz). Specify 120, 208, 240 or 277 options only when ordering with fusing (SF, DF options).
- Also available as a separate accessory; see Accessories information at left.
- 1.5 G vibration load rating per ANCI C136.31.
- Requires "SPA" mounting option. Must be ordered as a separate accessory; see Accessories information. For use with 2-3/8" mast arm (not included).
- Specifies a ROAM® enabled luminaire with 0-10V dimming capability; PER option required. Not available with 347 or 480V. Add'l hardware and services required for ROAM® deployment; call 1-800-442-6745 or email: [sales@roamservices.net](mailto:sales@roamservices.net). N/A with BL30, BL50, or DS.
- Single fuse (SF) requires 120, 277 or 347 voltage option. Double fuse (DF) requires 208, 240 or 480 voltage option.
- Provides 50/50 luminaire operation via two independent drivers on two separate circuits. N/A with PER or DCR.
- Requires an additional switched line.
- Dimming driver standard. MVOLT only. Not available with DCR.
- Requires luminaire to be specified with PER option. Ordered and shipped as a separate line item.



One Lithonia Way • Conyers, Georgia 30012 • Phone: 800.279.8041 • Fax: 770.918.1209 • [www.lithonia.com](http://www.lithonia.com)  
© 2011-2015 Acuity Brands Lighting, Inc. All rights reserved.



## Performance Data

### Lumen Output

Lumen values are from photometric tests performed in accordance with IESNA LM-79-08. Data is considered to be representative of the configurations shown, within the tolerances allowed by Lighting Facts. Contact factory for performance data on any configurations not shown here.

LEDs	Drive Current (mA)	Performance Package	System Watts	Dist. Type	40K (4000 K, 70 minimum CRI)					50K (5000 K, 67 CRI)				
					Lumens	B	U	G	LPW	Lumens	B	U	G	LPW
60C (60 LEDs)	700 mA	60C 700 --K	132W	T2M	12,870	2	0	2	98	13,946	3	0	3	106
				T3M	13,630	2	0	3	103	14,770	3	0	3	112
				T4M	13,543	2	0	3	103	14,675	2	0	3	111
				T5M	13,690	4	0	2	104	14,834	4	0	2	112
				TFTM	13,791	2	0	3	104	14,944	2	0	3	113
	1000 mA	60C 1000 --K	206W	T2M	17,217	3	0	3	84	18,560	3	0	3	90
				T3M	18,234	3	0	3	89	19,656	3	0	4	95
				T4M	18,118	3	0	4	88	19,531	3	0	4	95
				T5M	18,314	5	0	3	89	19,742	5	0	3	96
				TFTM	18,450	3	0	3	90	19,889	3	0	4	97

### Lumen Ambient Temperature (LAT) Multipliers

Use these factors to determine relative lumen output for average ambient temperatures from 0-40°C (32-104°F).

Ambient		Lumen Multiplier
0°C	32°F	1.02
10°C	50°F	1.01
20°C	68°F	1.00
<b>25°C</b>	<b>77°F</b>	<b>1.00</b>
30°C	86°F	1.00
40°C	104°F	0.99

### Projected LED Lumen Maintenance

Data references the extrapolated performance projections for the **MR2 LED 60C** platform in a **25°C ambient**, based on 10,000 hours of LED testing (tested per IESNA LM-80-08 and projected per IESNA TM-21-11).

To calculate LLF, use the lumen maintenance factor that corresponds to the desired number of operating hours below. For other lumen maintenance values, contact factory.

Operating Hours	0	25,000	50,000	100,000
Lumen Maintenance Factor	1.0	0.94	0.90	0.82

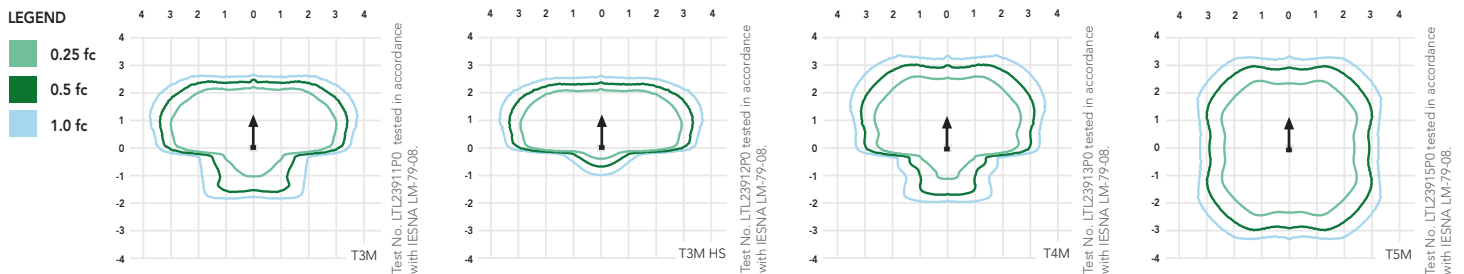
### Electrical Load

Number of LEDs	Drive Current (mA)	System Watts	Current (A)					
			120V	208V	240V	277V	347V	480V
60C	700	132W	1.321	0.756	0.659	0.580	0.462	0.337
	1000	206W	2.068	1.198	1.056	0.943	0.764	0.605

## Photometric Diagrams

To see complete photometric reports or download .ies files for this product, visit Lithonia Lighting's [MR2 LED homepage](#).

Isofootcandle plots for the MR2 LED 60C 1000 40K. Distances are in units of mounting height (20').



## FEATURES & SPECIFICATIONS

### INTENDED USE

Highly efficient and long-lasting, the MR2 LED is ideal for parking areas, street lighting, walkways and car lots.

### CONSTRUCTION

Single-piece die cast housing has a unique flow-through design that allows for optimized thermal management through convective cooling. A perforated housing prevents debris build-up while allowing natural cleaning of the heat sinks. Modular design allows for ease of maintenance and future light engine upgrades. The LED driver and electronics are thermally isolated from the light engine(s), ensuring long life. Housing is completely sealed against moisture and environmental contaminants. Low EPA (0.9 ft²) for optimized pole wind loading.

### FINISH

Exterior parts are protected by a zinc-infused Super Durable TGIC thermoset powder coat finish that provides superior resistance to corrosion and weathering. A tightly controlled multi-stage process ensures a minimum 3 mils thickness for a finish that can withstand extreme climate changes without cracking or peeling. Standard Super Durable colors include dark bronze, black, natural aluminum and white. Available in textured and non-textured finishes.

### OPTICS

Precision-molded acrylic lenses provide optimal luminaire spacing and improved uniformity. Lenses are indexed to the circuit board to ensure consistent optical alignment and delivering repeatable photometric performance. Light engines are available in standard 4000 K (67 CRI) or optional 5000 K (67 CRI) configurations. The MR2 has zero uplight and qualifies as a Nighttime Friendly™ product, meaning it is consistent with the LEED® and Green Globes™ criteria for eliminating wasteful uplight.

### ELECTRICAL

Light engine(s) consist of 60 high-efficacy LEDs mounted to metal-core circuit boards to maximize heat dissipation and promote long life (100,000 hrs at 40°C, L70). Class 1 electronic driver

designed to provide a power factor >90%, THD <20%, with an expected life of 100,000 hours with <1% failure rate. Easily-serviceable surge protection device meets a minimum Category C Low operation (per ANSI/IEEE C62.41.2).

### INSTALLATION

Integral arm provides easy installation to a pole and assists in alignment and leveling. Secure connection withstands up to 2.0 G vibration load rating per ANSI C136.31. The MR2 utilizes the AERIS™ series pole drilling pattern for SPA and RPA options; wall mounting bracket also available.

### LISTINGS

CSA certified to U.S. and Canadian standards. Light engines are IP66 rated; luminaire is IP65 rated. **U.S. Patent No. D556,357.**

DesignLights Consortium® (DLC) qualified product. Not all versions of this product may be DLC qualified. Please check the DLC Qualified Products List at [www.designlights.org](http://www.designlights.org) to confirm which versions are qualified.

### WARRANTY

Five year limited warranty. Full warranty terms located at [www.acuitybrands.com/CustomerResources/Terms\\_and\\_conditions.aspx](http://www.acuitybrands.com/CustomerResources/Terms_and_conditions.aspx).

**Note:** Actual performance may differ as a result of end-user environment and application. All values are design or typical values, measured under laboratory conditions at 25 °C. Specifications subject to change without notice.



# FEDERAL BUILDING MATERIALS SHEET



NEW STUCCO AT STAIRWELL WEST SIDE



EXISTING BRICK

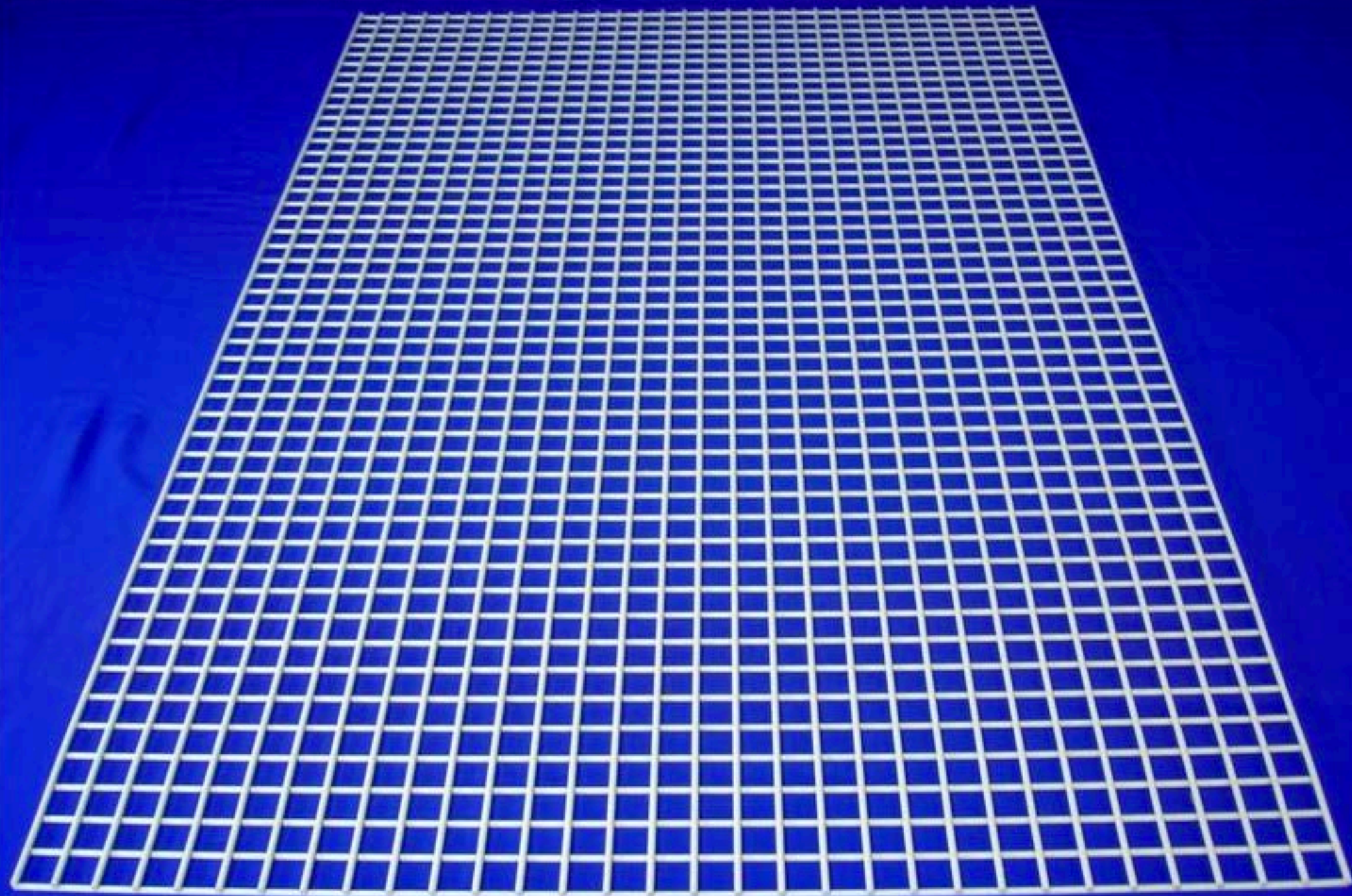


EXISTING CONCRETE PANELS AT EAST ELEV.



EXISTING BRONZE WINDOW FRAMES







## EXISTING PHOTOS FEDERAL BUILDING

TAKEN 12/16/2015



NORTH ELEVATION



SOUTHEAST ELEVATION



WEST ELEVATION



EAST ELEVATION